



ASSEMBLY EQUIPMENT PRODUCT CATALOGUE

TABLE OF CONTENTS

| | |
|--------------------------------|----|
| Cutting Machines..... | 1 |
| Skiving Machines..... | 12 |
| Insert Pushing Machines..... | 18 |
| Ferrule Marking Machines..... | 21 |
| Crimping Machines..... | 23 |
| Test Benches..... | 52 |
| Industrial Machines..... | 55 |
| Complementary Products..... | 58 |
| Die Sets..... | 61 |
| Hose & Fittings Selection..... | 87 |

DISCLAIMER: We reserve the right to modify our products and/or related services and/or discontinue the manufacture and/or supply of any of the products and/or related services presented within documentation on products (including this Technical Manual or in any similar technical documentation) without notice. No product is warranted as being fit for a particular purpose and we do not assume any liability in connection with the use of our products other than those technically approved by us for specific products. This document supersedes all previous versions and previously issued documentation.

A GLOBAL REPUTATION



“Manuli Hydraulics is focused on achieving excellence in the design, manufacture, and supply of fluid conveyance solutions, components and associated equipment for high pressure hydraulics, industrial material conveyance, refrigeration and cooling applications.”

From design to manufacture, and assembly, Manuli Hydraulics’ continual commitment to this unified philosophy makes us a global leader in providing integrated solutions for fluid and material transfer connector applications including hydraulics, refrigeration & air conditioning, oil & gas, water and industrial low-pressure.

Manuli Hydraulics offer a complete range of hoses, fittings and assembly equipment which are purposely designed to work seamlessly together. This harmonized approach allows us to guarantee the quality and performance of our hose assemblies.

Every metre of hose and every single fitting is backed by industry knowledge and experience, made available to you through our dedicated team of application engineers.

From advice on component selection and configuration, our technical expertise allows us to support and work directly with our customers whenever and wherever they are based.

WHY CHOOSE MANULI HYDRAULICS?

Partnering with Manuli Hydraulics means choosing a global leader. Renowned for our commitment to innovation, quality, and sustainability, we deliver durable, and efficient solutions that enhance the performance, and reliability of hydraulic systems. With a strong global presence and a customer-first approach, Manuli Hydraulics continues to set industry standards.

GLOBAL FOOTPRINT

A vast network of manufacturing plants and robust supply chain network ensures efficiency and accessibility.

FULLY INTEGRATED SOLUTIONS

Fully integrated hoses, fittings, and assembly equipment optimized for superior performance.

UNCOMPROMISING QUALITY

Stringent testing and quality control processes meet and exceed international standards.

RIGOROUS TESTING

Our state-of-the-art facilities conduct extensive testing, including specific hose assembly validation to guarantee durability and reliability.

TECHNICAL KNOW HOW

Our expert team is ready to assist with product selection, application engineering, and troubleshooting. We provide comprehensive training to ensure your team is equipped to succeed.

EXCEPTIONAL CUSTOMER SUPPORT

Manuli is committed to providing 'best in class' service. Our dedicated and responsive customer service teams are focused on creating and maintaining customer satisfaction. When you choose Manuli Hydraulics, you gain more than just superior products—you gain a partner dedicated to optimizing your hydraulic systems. Experience innovation, reliability, and industry-leading expertise with Manuli Hydraulics.

MANULI ASSEMBLY EQUIPMENT

Manuli Hydraulics has always prided itself on its integrated approach of the design, manufacture, and supply of flexible connector solutions, ensuring that every single hose and fitting is part of a unified approach which guarantees safety, reliability and performance. This unified approach also includes the assembly equipment used to build hose assemblies.

The creation of high-quality, reliable hose assemblies for hydraulics, refrigeration and industrial applications requires more than just simple tools and a basic knowledge of how to put the components together. The Manuli Equipment Unit combines cutting-edge assembly equipment with decades of experience and knowledge of what makes a great hose assembly.

The Manuli Hydraulics Assembly Equipment product range covers every stage of the hose assembly process at all operational scales. So whether you assemble 10 or 10,000 hoses a week, the Manuli Equipment range has an entire range of products suited to your needs.

START TO FINISH ASSEMBLY SOLUTIONS

When you assemble a hose there are several critical points in the process which can determine the success or failure of the assembly in use. Our knowledge and experience of hose assembly processes, combined with our unique level of control over the components, allows us to guarantee the quality and reliability of any genuine Manuli hose assembly to a degree that no other hose manufacturer can.

The Manuli Equipment product range covers all stages of the hose assembly process, providing a “start to finish” portfolio that allows us to supply equipment to any assembler, regardless of operation size, hose type and location.



FIELD SERVICE & MOBILE WORKSHOP 12V/24V

A compact and robust line up to 2", perfect for on-site repair. The hand crimper, MHP 80 EVO, offers accessibility to all sites. A complete 12V line delivers hose assembly quality equal to the one obtained in a workshop.

MPH 80 EVO (Pg.25)

- Capacity: 1" 2 WB
- Compact
- Lightweight
- Easy to use
- Balanced design
- Dual stage pump

MH SKY (Pg.13)

- Capacity: 2"
- Economic
- Simple
- Compact
- Robust
- Plug'n skive system



MV 137 (Pg.36)

- Capacity: 1 1/4" 4WS
- Robust and compact design
- Lightweight
- High crimping speed
- Suitable also for 90° elbow fittings
- Cylinder protection
- Remote head mounting option possible

MV 22 CUT (Pg.2)

- Capacity: 1 1/4" 4WS
- Smooth bending system
- 90° cut
- Clean cut
- Scalloped blade
- Dust collector included
- Multiple voltage options

EXPERT SERVICE LINE

A result of our collaboration with OEM assemblers and hose manufacturers, our expert workshop combines power, reliability, speed, openness and comfort. Manuli Hydraulics is now the most innovative manufacturer in machines dedicated to OEM, providing (for instance) the Safe Crimp System which guarantees a constant control of hose assemblies.

M 90 CUT (Pg.10)

- Capacity: 3" 6WS
- Very powerful
- Heavy duty for difficult cuts
- Hydraulic bending
- Brake motor
- Electronic soft start

M 300 SKY (Pg.15)

- Capacity: 3" 6WS
- Plug'n skive system
- Large dust collector
- Robust & easily adjustable knife for quick and easy changeover
- Suitable for high volume production
- 2-way rotation



M 1500 INS (Pg.19)

- Capacity: a 1l hydraulic hoses from 3/4" up to 2" Interlock
- Compact
- Sturdy
- Powerful
- Hydro pneumatic power pack

MS 480 (Pg.42)

- Capacity: 3" 6WS
- High crimp force
- Large opening
- Safe Crimp System (SCS) control
- Wide family of dies for industrial hoses
- Long master dies
- Robust
- Low noise level
- Easy die set-up with ergonomic gun

INDUSTRIAL WORKSHOP

A workshop developed on a complete range of Industrial crimpers combining power, openness, ergonomics and solutions for handling large diameters. This workshop increases your potential of opportunities. It allows you to prospect many and various markets and thus amortize your investment quickly. Our knowledge of the activity constraints led us to offer ergonomic solutions adapted to the handling of large diameters.



MS 800 (Pg.43)

- Capacity: 4" 4WS / 3" 6WS / 8" Industrial
- Designed for heavy duty large bore hydraulic hoses
- High power and speed
- Ergonomically designed for large bore hoses
- Safe Crimp System (SCS) for maximum reliability during the crimping process
- Large opening up to 8"
- Long master dies
- Very high crimping force

INTRODUCTION

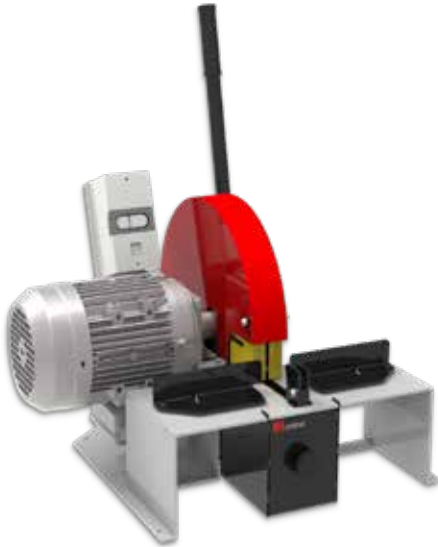


Our dedicated range of hose cutting machines produce a high-quality cut even through the toughest hose structures. With a selection of cutting blade styles available, there's no job that our cutting machines can't cope with.

M 22 CUT / MV 22 CUT

STARTER WORKSHOP BENCHTOP MOBILE CUTTING MACHINE

CUTTING
MACHINES
2



KEY FEATURES

- Smooth bending system
- 90° cut
- Clean cut
- Scalloped blade
- Dust collector included
- Multiple voltage options

STANDARD



Scalloped Blade



Dust Collector

TECHNICAL SPECIFICATIONS

CAPACITY

2wb: 1¼" max.

4ws: 1¼" max.

ROTATION SPEED

3000 rpm

SCALLOPED BLADE DIAMETER

254 mm (10") included

MAX HOSE OD.

50 mm (1.969")

MOTOR

2.2 kW

VOLTAGES

220/240 V, 1Ph, 50/60 Hz

380/415 V, 3Ph, 50 Hz

110 V, 1Ph, 60Hz

208/240 V, 3Ph, 60 Hz

12/24 V also available upon request.

DIMENSIONS

630 x 485 x 650 mm

(25 x 19 x 26")

PACKAGING

800 x 600 x 830 mm

(31 x 24 x 33")

NET WEIGHT

42 kg (93 lb)

GROSS WEIGHT

58 kg (128 lb)

TECHNICAL FEATURES

Dimensions van type machine:
488 x 630 x 650 mm
(19.2 x 24.8 x 25.6");
38 kg (84 lb)

Single-phase S3 25% service factor.

OPTIONAL



Battery



Slotted Blade



Smoke Extractor
*except version 12/24V

M 30 CUT E

STARTER & PROFESSIONAL WORKSHOP
BENCHTOP CUTTING MACHINE, OPTIONAL SKIVING



KEY FEATURES

- Compact design
- Easy and safe to use
- Versatile, scalloped blade for high performance and efficient cutting with minimal smoke

STANDARD



Scalloped Blade

TECHNICAL SPECIFICATIONS

CAPACITY

2wb: 2" max.
4ws: 2" max.
6ws: 1¼" max.
Industrial: 2" max.

VOLTAGES

220/240 V, 1Ph, 50/60 Hz
220/240 V, 3Ph, 50 Hz
380/415 V, 3Ph, 50 Hz
208/240 V, 3Ph, 60 Hz

Other voltages available on request

ROTATION SPEED

3000 rpm

DIMENSIONS

835 x 545 x 640 mm

SCALLOPED BLADE DIAMETER

300 mm (11.8")

(33 x 21 x 25")

PACKAGING

1170 x 770 x 1100 mm

MAX HOSE OD.

85 mm (3.346")

(46 x 30 x 43")

MOTOR

3.0 kW

NET WEIGHT

75 kg (165 lb)

GROSS WEIGHT

90 kg (198 lb)

OPTIONAL



Cutting Rail



Slotted Blade



Smoke Extractor

M 30 CUT L

STARTER & PROFESSIONAL WORKSHOP STAND TYPE CUTTING MACHINE

CUTTING
MACHINES
4



KEY FEATURES

- Compact design
- Easy and safe to use
- Scalloped blade for clean cut
- High performance and efficient cutting with minimal smoke
- Ergonomic, easy to clean
- Integrated dust collector

STANDARD



Smoke Suction
Connector



2 Dust Collectors



Scalloped Blade

TECHNICAL SPECIFICATIONS

| | |
|---------------------------------|--|
| CAPACITY | VOLTAGES |
| 2wb: 2" max. | 220/240 V, 1Ph, 50/60 Hz |
| 4ws: 2" max. | 220/240 V, 3Ph, 50 Hz |
| 6ws: 1 1/4" max. | 380/415 V, 3Ph, 50 Hz |
| Industrial: 2" | 208/240 V, 3Ph, 60 Hz |
| | Other voltages available on request. |
| ROTATION SPEED | DIMENSIONS |
| 3000 rpm | 765 x 500 x 1150 mm (30 x 20 x 45") |
| SCALLOPED BLADE DIAMETER | PACKAGING |
| 254 mm (10") | 800 x 600 x 1200 mm (32 x 24 x 47") |
| MAX HOSE OD. | NET WEIGHT |
| 85 mm (3.34") | 92 kg (203 lb) |
| MOTOR | GROSS WEIGHT |
| 3.0 kW | 120 kg (265 lb) |

Single-phase S3 25% service factor.

OPTIONAL



Cutting Rail



Slotted Blade



Smoke Extractor

M 30 CUT & SKIVE

STARTER & PROFESSIONAL WORKSHOP
BENCHTOP, INTEGRATED CUTTING & SKIVING



KEY FEATURES

- Compact design
- Two operations in one machine
- Easy and safe to use
- Versatile, scalloped blade for high performance and efficient cutting with minimal smoke
- Dust free skive operation (drawers for dust collection)
- Electronic brake

STANDARD



Scalloped Blade



2 Dust Collectors

TECHNICAL SPECIFICATIONS

CAPACITY

2wb: 2" max.
4ws: 2" max.
6ws: 1 1/4" max.
Industrial: 2" max.

VOLTAGES

220/240 V, 1Ph, 50/60 Hz
220/240 V, 3Ph, 50 Hz
380/415 V, 3Ph, 50 Hz
208/240 V, 3Ph, 60 Hz

Other voltages available on request.

ROTATION SPEED (CUT)

3000 rpm

DIMENSIONS

835 x 545 x 640 mm

ROTATION SPEED (SKIVE)

200 rpm

(33 x 21 x 25")

SCALLOPED BLADE DIAMETER

300 mm (11.8")

PACKAGING

1170 x 770 x 1100 mm

MAX HOSE OD.

85 mm (3.34")

NET WEIGHT

85 kg (187 lb)

MOTOR

2.2 kW

GROSS WEIGHT

100 kg (220 lb)

TECHNICAL FEATURES

Skiving tools for External Skiving (ESE) and for Internal Skiving (IS) to be ordered separately.

OPTIONAL



Cutting Rail



Tool Kit ESE



Tool Kit IS



Smoke Extractor

M 40 CUT AUTO

Provided with its own **automatic** and **tiltable decoiler**, the **M 40 CUT AUTO** is the ideal tool for OEM hose assemblers.

Featured with 4 feeding tubes for hydraulic hoses with OD up to **1" 4SP**, and **an infinite number of cutting** operations, it enables a fast, easy and accurate production process.

CUTTING MACHINES 6



DECOILER SPECIFICATIONS

| | |
|------------------------------------|---------------------------|
| MOTOR | VOLTAGE |
| 1.6 kW | 380/415V - 3Ph - 50/60 Hz |
| TILTING | DIMENSIONS |
| 0 - 90° | 1400 x 1250° x 1600 mm |
| PLATE DIAMETER | WEIGHT |
| 1200 mm | 310 kg |
| MAXIMUM LOAD | ROTATION SPEED |
| 250 kg | 0-60 tr/min |
| COIL INTERNAL DIAMETER | |
| 200 - 600 mm | |
| *2300 mm with automatic tensioner. | |

CUTTING SPECIFICATIONS

| | |
|--|---------------------------|
| FEEDING TUBES INTERNAL DIAMETER | |
| 11 mm - 3/16" 1SN max. | 31 mm - 3/4" 2SN max. |
| 21 mm - 1/2" 2SN max. | 41 mm - 1" 4SP max. |
| SLOTTED* BLADE DIAMETER | |
| 400 mm | |
| MOTOR | VOLTAGE |
| 4.5 kW | 380/415V - 3Ph - 50/60 Hz |
| MINIMUM CUTTING LENGTH | |
| 150 mm | |
| FEEDING SPEED | ACCURACY |
| 0.5 m/s | ± 1 % |
| MINIMUM AIRE PRESSURE | |
| 6 bar | |
| WEIGHT | DIMENSIONS |
| 380 kg | 1100 x 800 x 1500 mm |
| *Smooth blade available | |



For a safer environment when using the machine, a smoke extractor can be connected to the M 40 CUT AUTO.

M 55 CUT L

BASIC AND PROFESSIONAL WORKSHOP CUTTING MACHINE



KEY FEATURES

- Compact design
- Easy and safe to use
- Scalloped blade for clean cut
- High performance and efficient cutting with minimal smoke
- Ergonomic, easy to clean
- Integrated dust collector

CUTTING MACHINES
7

STANDARD



Slotted Blade



Dust Collector



Smoke Suction Connector

TECHNICAL SPECIFICATIONS

| CAPACITY* | VOLTAGES |
|--------------------------|---|
| 2wb: 3" max. | 220/240 V, 1Ph, 50/60 Hz |
| 4ws: 2-1/2" max. | 220/240 V, 3Ph, 50 Hz |
| 6ws: 2" max. | 380/415 V, 3Ph, 50 Hz |
| Industrial: 3" max. | 208/240 V, 3Ph, 60 Hz |
| | Other voltages available on request. |
| ROTATION SPEED | DIMENSIONS |
| 3000 rpm | 830 x 520 x 1160 mm |
| SCALLOPED BLADE DIAMETER | (33 x 20 x 46") |
| 400 mm (15.7") | TECHNICAL SPECIFICATIONS |
| MAX HOSE OD. | Diameter of suction connector : 125 mm (5") |
| 95 mm (3.74") | NET WEIGHT |
| MOTOR | 135 kg (298 lb) |
| 5.5 kW | |

* Indicative capacities depending on hose type.

OPTIONAL



Cutting Rail



Decoiler



DV 32



Scalloped Blade



Smooth Blade



Smoke Extractor

M 55 CUT/P

EXPERT SERVICE LINE STAND TYPE CUTTING MACHINE

KEY FEATURES

- Versatile, slotted blade for high performance with minimal smoke
- Ergonomic and functional design
- Double foot pedal system
- Safety cover and feeding guides for hose (easy and fast cutting operation)
- Digital counter for maintenance assistance
- Adjustable speed for cutting on pneumatic version



Classic Version

STANDARD



Control Panel



Slotted Blade



Feeding Guide



Dust Collector

TECHNICAL SPECIFICATIONS

CAPACITY

2wb: 2" max.
4ws: 2" max.
6ws: 2" max.
Industrial: 2"

DIMENSIONS

1140 x 1000 x 1280 mm
(45 x 39 x 50")

PACKAGING

1600 x 1200 x 1600 mm

ROTATION SPEED

3000 rpm

NET WEIGHT

240 kg (529 lb)

SLOTTED BLADE DIAMETER

400 mm (15.7")

GROSS WEIGHT

280 kg (617 lb)

MAX HOSE OD.

80 mm (3.15")

TECHNICAL FEATURES

Diameter of the suction connection: 150 mm (6")

MOTOR

7.5 kW

Options: Pneumatic bending system, scalloped blade

VOLTAGES

220/240 V, 1Ph, 50/60 Hz
220/240 V, 3Ph, 50 Hz
380/415 V, 3Ph, 50 Hz
208/240 V, 3Ph, 60 Hz

Other voltages available on request.

OPTIONAL



Cutting Rail



Decoiler



Smooth blade



DV 32



Smoke Extractor

M 75 CUT/P

**EXPERT SERVICE LINE
STAND TYPE CUTTING MACHINE**



Pneumatic Version

Manual Version

KEY FEATURES

- Very powerful
- Heavy duty for difficult cuts
- Resistant for extreme cuts
- New design:
 - Easy maintenance
 - Efficiency for smoke extraction
- Motor brake
- Pneumatic version (option)
- Option for industrial hose:
 - Blade 540 mm for hoses with external OD max 150 mm

CUTTING MACHINES 9

STANDARD



Slotted Blade

TECHNICAL SPECIFICATIONS

| | |
|-------------------------------|---|
| CAPACITY | VOLTAGES |
| 2wb: 3" max. | 220/240 V, 1Ph, 50/60 Hz |
| 4ws: 2" max. | 220/240 V, 3Ph, 50 Hz |
| 6ws: 2" max.* | 380/415 V, 3Ph, 50 Hz |
| ROTATION SPEED | 208/240 V, 3Ph, 60 Hz |
| 3000 rpm | DIMENSIONS |
| SLOTTED BLADE DIAMETER | 910 x 820 x 1280 mm |
| 520 mm (20.5") included | (36 x 32 x 50") |
| MAX HOSE OD. | NET WEIGHT |
| 125 mm (5")** | 215 kg (474 lb) |
| MOTOR | TECHNICAL FEATURES |
| 7.5 kW | Diameter of suction connection: 130 mm Electronic soft start |
| | Optional tool: ² Pneumatic version Other blade on demand |

*Minimum air pressure : 9,5 bar
**150 mm with blade option 540 mm

OPTIONAL



Cutting Rail



Decoiler



Smooth Blade



DV 32



Smoke Extractor

M 90 CUT

EXPERT SERVICE LINE
STAND TYPE CUTTING MACHINE

CUTTING
MACHINES
10



KEY FEATURES

- Very powerful
- Heavy duty for difficult cuts
- Hydraulic bending
- Motor brake
- Electronic soft start
- Smoke suction integrated in cutting table

STANDARD



Slotted Blade



Production Counters



Smoke Suction Connector



CME Electrical Footswitch

TECHNICAL SPECIFICATIONS

CAPACITY

2wb: 3 1/2" max.
4ws: 3 1/2" max.
6ws: 3" max.
Industrial: 5" max.

VOLTAGES

220/240 V, 1Ph, 50/60 Hz
220/240 V, 3Ph, 50 Hz
380/415 V, 3Ph, 50 Hz
208/240 V, 3Ph, 60 Hz

ROTATION SPEED

3000 rpm

DIMENSIONS

1000 x 1060 x 1350 mm
(39 x 42 x 53")

SLOTTED BLADE DIAMETER

520 mm (20.5") included

MAX HOSE OD.

125 mm (5")

NET WEIGHT

260 kg (573 lb)

MOTOR

9.0 kW

TECHNICAL FEATURES

Diameter of suction connection: 110 mm (4.33")

OPTIONAL



Cutting Rail



Decoiler



DV 32



Smoke Extractor

ACCESSORIES AND TOOLS

CUTTING DISCS

SCALLOPED BLADE TYPE

The scalloped blade is suitable for all hose types. It is able to reach a high quality of cutting surface and is the standard on 254 and 300 mm blades.



SLOTTED BLADE TYPE

The slotted blade is recommended for cutting standard and heavy duty hoses. It is ideal for continuous service, as the blade profile has been optimised to maintain a low temperature on the cutting edge. This blade provides an extended operational life of up to 2 times superior to the previous blade, and is the standard on 400 and 520 mm blades. It is optional on diameter 254 mm.



MOTOR BRAKE

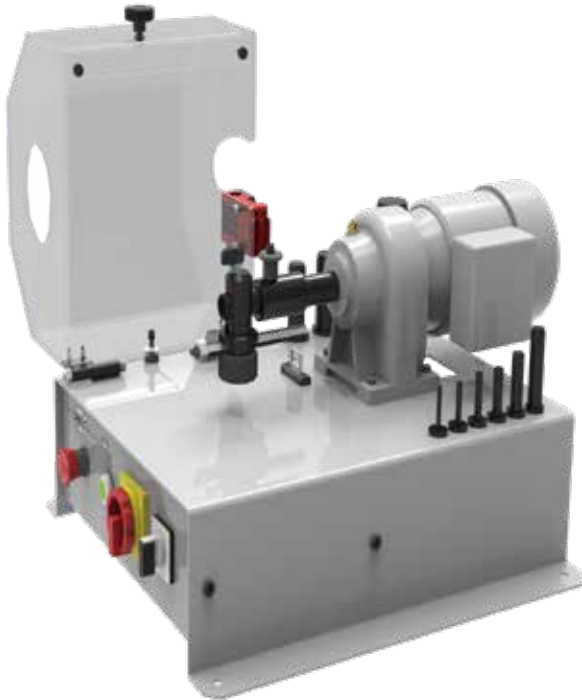
The motor brake is a device which stops the disc immediately when the stop button is pushed.

PNEUMATIC BENDING

Available on M 55 CUT and M 75 CUT.

Pneumatic bending facilitates cutting, as the operator does not have to force the hose on the blade. The pneumatic system, activated by a foot switch, offers hands-free operation. This is the same principle for the hydraulic bending on M 90 CUT.

INTRODUCTION



From manual hand-skiving tools for low volume maintenance, to high volume production machines, our skiving equipment provides a clean, safe hose skive, whatever your hose type (for both internal and external skive).

MH SKY

**FIELD SERVICE & MOBILE WORKSHOP
MANUAL, PORTABLE SKIVING TOOL**

KEY FEATURES

- Portable, lightweight
- Economic
- Simple
- Compact
- Robust
- Plug'n skive system



TECHNICAL SPECIFICATIONS

CAPACITY

2wb: 2" max.

4ws: 2" max.

DIMENSIONS

413 x 52 x 224 mm
(16 x 2 x 9")

NET WEIGHT

3 kg (7 lb)

TECHNICAL FEATURES

Tool selection:

- External Skiving Kit (ESE)
including 10 mandrels
(6-8-10-13-16-19-25-32-38-50)

- Internal Skiving Kit (IS) including 7
mandrels (13-16-19-25-32-38-50)

Internal skiving tools can also be
ordered per diameter.

OPTIONAL



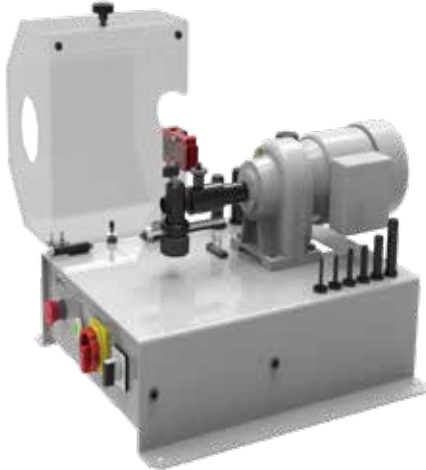
Tool Kit ESE



Tool Kit IS

M 50 SKY +

**SMALL SERVICE WORKSHOP
BENCHTOP SKIVING**



KEY FEATURES

- Plug'n skive system
- Compact & stable
- Safety switch on the cover
- Good visibility
- Tool storage included
- Foot pedal drive with emergency stop
- 2-way rotation

STANDARD



CME Electrical Footswitch

TECHNICAL SPECIFICATIONS

CAPACITY

2wb: 2" max.

4ws: 2" max.

PACKAGING

800 x 600 x 700 mm

(31 x 24 x 28")

ROTATION SPEED

100 rpm

NET WEIGHT

45 kg (99 lb)

MOTOR

0.25 kW

GROSS WEIGHT

55 kg (121 lb)

VOLTAGES

220/240 V, 1Ph, 50 Hz

380/415 V, 3Ph, 50 Hz

220/240 V, 1Ph, 60 Hz

380/415 V, 3Ph, 60 Hz

TECHNICAL FEATURES

Tools available (to be ordered separately)

ESE, IS, ESP1, ESP2

DIMENSIONS

500 x 660 x 360 mm

(19 x 26 x 14")

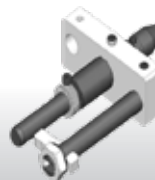
OPTIONAL



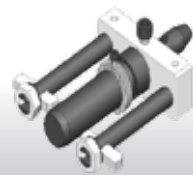
Tool Kit IS



Tool Kit ESE



Tool Kit ESP 1



Tool Kit ESP 2

M 300 SKY

STARTER & PROFESSIONAL WORKSHOP STAND TYPE SKIVING MACHINE



KEY FEATURES

- Plug'n skive system
- Large dust collector
- Robust & easily adjustable knife for quick and easy changeover
- Suitable for high volume production
- 2-way rotation
- Speed regulator for single-phase version

TECHNICAL SPECIFICATIONS

CAPACITY

2wb: 2" max.

4ws: 2" max.

6ws: 3" max. *

ROTATION SPEED

300 rpm

MOTOR

0,9 kW

VOLTAGES

220/240 V, 3Ph, 50 Hz

380/415 V, 3Ph, 50 Hz

208/240 V, 3Ph, 60 Hz

380/415 V, 3Ph, 60 Hz

DIMENSIONS

675 x 550 x 1130 mm

(27 x 22 x 44")

*with clamping system

PACKAGING

800 x 600 x 1200 mm

(32 x 24 x 47")

NET WEIGHT

100 kg (220 lb)

GROSS WEIGHT

160 kg (353 lb)

TECHNICAL FEATURES

Options available: hose clamping system (recommended for hoses from 2")

Tools available (to be ordered separately):
ESA, IS, ESP1, ESP2

OPTIONAL



Tool Kit IS



Tool Kit ESA



Tool Kit ESP 1



Tool Kit ESP 2



Manual Hose Clamping System



Pneumatic Hose Clamping System



Speed Regulator

ACCESSORIES AND TOOLS

EXTERNAL SKIVING TOOLS

Depending on the machine and on customer needs, Manuli offers three types of external skiving tools:

1. ESE (EXTERNAL SKIVING ECONOMIC)

For MH SKY, M 50 SKY + & M 30 CUT & SKIVE

The ESE kit includes 10 mandrels: 1/4", 5/16", 3/8", 1/2", 5/8", 3/4", 1", 1 1/4", 1 1/2", 2"

2. ESA (EXTERNAL SKIVING ADJUSTABLE)

For M 300 SKY

The ESA kit includes 11 mandrels: 3/16", 1/4", 5/16", 3/8", 1/2", 5/8", 3/4", 1", 1 1/4", 1 1/2", 2"

ESA mandrels are also available in 2 1/2" and 3"

3. ESP (EXTERNAL SKIVING PRODUCTION)

For M 50 SKY + and M 300 SKY

ESP tools are individual 'skiving heads' intended to be pre-set to the right depth and length for greater productivity. They are recommended for batch skiving operations and a second knife can be added for abrasion resistant covers.

ESP is available in: 3/16", 1/4", 5/16", 3/8", 1/2", 5/8", 3/4", 1", 1 1/4", 1 1/2", 2", 2 1/2"

INTERNAL SKIVING TOOLS

IS (INTERNAL SKIVING)

For all machines

The IS kit includes 7 mandrels: 1/2", 5/8", 3/4", 1", 1 1/4", 1 1/2", 2"

They are also available in 5/8", 2 1/2" and 3"

The ring is heat treated to resist the abrasion of the hose wires.

Optional venturi system with IS tool.

ACCESSORIES AND TOOLS

HOSE CLAMPING SYSTEM

Recommended for skiving hoses over 2" (DN 50)

PLUG'N SKIVE SYSTEM

All Manuli Hydraulics skiving machines are equipped with the Plug'n Skive System which allows the quick and easy insertion of tools.

With the Plug'n Skive System no tools are needed to insert the skiving mandrel. Simply push the mandrel into the locking system to unlock it, lift the knob and pull out the tool.

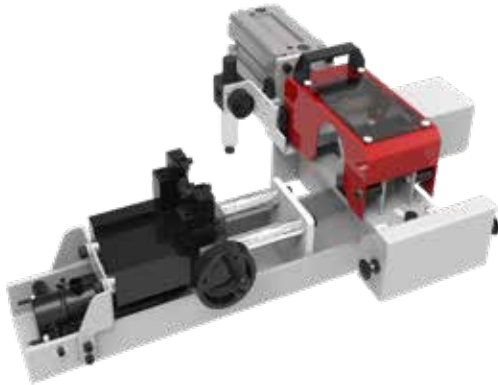
INTRODUCTION



Our insert pushing equipment takes the effort and uncertainty out of building hose assemblies by making sure that fittings are fully inserted prior to crimping.

M 1500 INS

EXPERT SERVICE LINE
BENCHTOP COUPLING INSERTER



KEY FEATURES

- Compact
- Sturdy
- Powerful

STANDARD



Hydro-Pneumatic Pump

TECHNICAL SPECIFICATIONS

CAPACITY

2wb: 2" max.

4ws: 2" max.

6ws: 2" max.

DIMENSIONS

750 x 660 x 300 mm

(30 x 26 x 12")

NET WEIGHT

70 kg (154 lb)

POWER SUPPLY

Compressed air (7 bar)

TECHNICAL FEATURES

Optional tool: for small bore ¼",
⅜", ½" shell

M 2000 INS

EXPERT SERVICE LINE
BENCHTOP COUPLING INSERTER



KEY FEATURES

- Compact
- Sturdy
- Powerful hydraulic cylinder
- Insert centring device
- Joystick operated clamping and insertion



Hydraulic Manual Version

TECHNICAL SPECIFICATIONS

CAPACITY

6ws: 3/4" - 2" with special tool

6ws: 2" - 4"

Industrial: 6"

DIMENSIONS

800 x 500 x 900 mm

(31 x 20 x 35")

INSERTION SPEED*

28 mm/s

VOLTAGES

380/415, 3 Ph, 50 Hz

INSERTION STROKE

300 mm

MAXIMUM FLANGE

250 mm

INSERTION FORCE

2 000 daN

CLAMPING LENGTH

200 mm

POWER*

1.5 kW

NET WEIGHT

150 kg (330 lb)

* with the electrical version

INTRODUCTION



Ensure full traceability with our ferrule marking equipment, complete with a full set of alphanumeric and additional character punches.

M 50 MARK

**AFTER MARKET SERVICE
BENCHTOP, FERRULE MARKING**

KEY FEATURES

- Robust
- Easy to use
- Compact
- Large space for 14 stamps
- Stamp holder with numbering wheel; 3 figures on the wheel + 1 groove for stamps



TECHNICAL SPECIFICATIONS

| | |
|------------------------------|---|
| CAPACITY | SIZE OF THE STAMPS |
| 2wb: 4" max. | 6 x 3 mm |
| 4ws: 4" max. | (0.236 x 0.118") |
| DIMENSIONS | HEIGHT OF THE LETTERS |
| 390 x 360 x 520 mm | 2.5 mm |
| (15 x 14 x 20") | (0.098") |
| PACKAGING | TECHNICAL FEATURES |
| 800 x 600 x 830 mm | Optional stamp holder with numbering wheel; 3 figures on the wheel and one groove for 10 stamps |
| (31 x 24 x 33") | |
| NET WEIGHT | STAMP BOX |
| 34 kg (75 lb) | Includes stamp box of 100 stamps & 20 blanks |
| GROSS WEIGHT | |
| 50 kg (110 lb) | |
| STANDARD STAMP HOLDER | |
| 2 x 14 stamps | |

INTRODUCTION



Our crimping machines come in a variety of sizes and capacities, making them ideal for everything from one-off, small bore maintenance jobs to full scale assembly production operations.

CRIMPING MACHINES EVO RANGE

Manuli Hydraulics is always on the lookout for ways to improve both the efficiency and the quality of new and existing production operations.

As a market leader in assembly machines, we wanted to offer new crimping machines to improve the operator's comfort, giving more flexibility when assembling hoses. This led to the creation of the new EVO crimping machines.

These machines combine the robustness required for harsh environments with the reliability needed for busy workshops. Their compact and ergonomic design, along with the ease of set up and maintenance, make them suitable for a variety of applications.

This extensive range is highly adaptable, with various options available allowing users to customise their machine according to their specific needs.



- Extensive range for both industrial and hydraulic hoses.
- 137, 240, 350 and 420 tonnes variants
- From 3/16 up to 4" hose diameter
- 3 kW, 4 kW and 5,5 kW motor for 1 Ph/3Ph



- SC panel - Smart Control panel. Daily counter. Semi-automatic opening.
- SCE panel - electronic micrometer with the ability to save up to 75 configurations
- Caliper connected and numerical display of the crimping range on SCE and SCS
- SCS panel - Safe Crimp System



- Compact and ergonomic design
- Easy set up
- Various options available depending on our customers' needs and workshops



- Robust
- Ease of maintenance (foam pads and dust collector)
- Compatibility with all tensions (different frequencies)

MHP 80 EVO

**FIELD SERVICE & MOBILE WORKSHOP
HAND PUMP, PORTABLE**



KEY FEATURES

- Compact
- Lightweight
- Easy to use
- Balanced design
- Dual stage pump

TECHNICAL SPECIFICATIONS

CAPACITY*

2wb: 1" max.

4ws: 1/2" max.

CRIMP RANGE

6 - 43 mm (0.236 - 1.693")

CRIMP FORCE

80 t

OPENING WITH DIES

+20 mm (+0.787")

COMPLETE OPENING

59 mm (2.323")

MASTER DIE LENGTH

56 mm (2.205")

STANDARD DIES

16, 18, 20, 22, 24, 27, 30**

DIMENSIONS

360 x 270 x 390 mm

(14 x 11 x 15")

PACKAGING

800 x 600 x 830 mm

(31 x 24 x 33")

NET WEIGHT

26 kg (57 lb)

GROSS WEIGHT

39 kg (86 lb)

TECHNICAL FEATURES

Hand pump: 5000 psi (double speed)

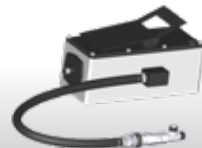
*Indicative capacities depending on hose and fitting type

** Master-dies used as dies set N°39

OPTIONAL



Maintenance Kits



Hydro-Pneumatic Pump

MHP 110 EVO

FIELD SERVICE & MOBILE WORKSHOP
HAND PUMP, PORTABLE



KEY FEATURES

- Flexible
- Portable
- Robust (protected narrow head)
- Multi-positioning (with removable plate)

OTHER VERSIONS AVAILABLE



Head Only Version



Magnet Version

TECHNICAL SPECIFICATIONS

| | |
|----------------------------|----------------------------------|
| CAPACITY* | STANDARD DIES |
| 2wb: 1" max. | 16, 18, 20, 22, 24, 27, 30, 39** |
| 4ws: 1" max. | DIMENSIONS |
| CRIMP RANGE | 289 x 237 x 270 mm |
| 6 - 43 mm (0.236 - 1.693") | (11 x 9 x 10") |
| CRIMP FORCE | PACKAGING |
| 110 t | 800 x 600 x 830 mm |
| OPENING WITH DIES | (31 x 24 x 33") |
| +20 mm (+0.787") | NET WEIGHT |
| COMPLETE OPENING | 29 kg (63 lb) |
| 59 mm (2.323") | Magnet version: 30kg (66 lb) |
| MASTER DIE LENGTH | WEIGHT (HEAD ONLY) |
| 60 mm (2.362") | 21 kg (46 lbs) |

* Indicative capacities depending on hose and fitting type
** Master-dies used as dies set N°39

OPTIONAL



Maintenance Kits



Hydro-Pneumatic Pump

MHP 137

**FIELD SERVICE & MOBILE WORKSHOP
HAND PUMP, PORTABLE**



KEY FEATURES

- High capacity
- Narrow head
- Audio-visual signal
- 350 bar technology robust & reliable
- Large opening

TECHNICAL SPECIFICATIONS

CAPACITY*

2wb / 4ws: 1"¼ max.

Industrial: 1"1/2 max.

CRIMP RANGE

4 - 70 mm (0.157 - 2.756")

CRIMP FORCE

137 t

OPENING WITH DIES

+28 mm (+1.102")

COMPLETE OPENING

108 mm (4.252")

MASTER DIE LENGTH

75 mm (2.962")

STANDARD DIES

14, 16, 18, 20, 22, 24, 27, 30, 33, 36, 39, 42, 45, 48, 51 and Refrifax dies 14, 18, 21

DIMENSIONS

480 x 250 x 340 mm

(19 x 10 x 13")

PACKAGING

800 x 600 x 830 mm

(31 x 24 x 33")

NET WEIGHT

55 kg (121 lb)

GROSS WEIGHT

75 kg (165 lb)

*Indicative capacities depending on hose and fitting type

OPTIONAL



Maintenance Kit



Aluminium Quick Change Gun



Die Storage Panel



Hydro-pneumatic Pump



Marking Dies



Die Sets for Brake & Air Conditioning Hoses

MRB 70 EVO R

MAINTENANCE WORKSHOP VERTICAL BENCHTOP



KEY FEATURES

- Ergonomically positioned adjustable head
- Axis of the head situated perpendicular to the operator
- Compact

TECHNICAL SPECIFICATIONS

| | |
|---|---------------------------------------|
| CAPACITY* | MOTOR |
| 2wb: 1" max. | 2.2 kW |
| 4ws: 3/4" max. | VOLTAGES |
| CRIMP RANGE | 220/240 V, 1Ph, 50 Hz |
| 6 - 43 mm (0.236 - 1.692") | e380/415V, 3Ph + N, 50Hz |
| CRIMP FORCE | Others voltages available on request |
| 70 t | DIMENSIONS |
| OPENING WITH DIES | 360 x 530 x 620 mm (14 x 21 x 25") |
| +20 mm (+0.787") | NET WEIGHT |
| COMPLETE OPENING | 58 kg (128 lb) |
| 59 mm (2.323") | GROSS WEIGHT |
| MASTER DIE LENGTH | 71 kg (156 lb) |
| 60 mm (2.362") | NOISE LEVEL |
| STANDARD DIES | <70 bB A |
| 06, 08, 10, 12, 15, 18, 21, 24, 27, 30. | |

*Indicative capacities depending on hose and fitting type

OPTIONAL



Maintenance Kits

MRB 137 EVO R

**MAINTENANCE WORKSHOP
VERTICAL BENCHTOP**



KEY FEATURES

- Ergonomically positioned adjustable head
- Axis of the head situated perpendicular to the operator
- Compact

TECHNICAL SPECIFICATIONS

| | |
|---|---|
| CAPACITY* | MOTOR |
| 2wb / 4ws: 1"¼ max. Industrial: 1"1/2 max. | 1.5 kW (110V) 2.2 kW (230V) |
| CRIMP RANGE | VOLTAGES |
| 4-70 mm (0.157 - 2.756") | 110 V, 1Ph, 60 Hz 220/240 V, 1 Ph, 50 Hz 380/415V, 3 Ph + N, 50 Hz +12/24V |
| CRIMP FORCE | Other voltages available on request |
| 137 t | |
| OPENING WITH DIES | |
| +28 mm (+1.102") | |
| COMPLETE OPENING | |
| 108 mm (4,252") | |
| MASTER DIE LENGTH | DIMENSIONS |
| 75 mm (2.953") | 360 x 530 x 620 mm (14 x 21 x 25") |
| STANDARD DIES | NET WEIGHT |
| 14, 16, 18, 20, 22, 24, 27, 30, 33, 36, 39, 42, 45, 48, 51 | 85 kg (187 lb) |
| NOISE LEVEL | GROSS WEIGHT |
| <70 dB A | 89 kg (196 lb) |

*Indicative capacities depending on hose and fitting type.

OPTIONAL



Maintenance Kits



Die Storage Panel



Aluminium Quick Change Gun



Die Storage Panel EVO R

MB 137 EVO

ASSEMBLING FOR FIELD REPAIR BENCHTOP CRIMP MACHINE



KEY FEATURES

- Crimp force of up to 137 tonnes for hoses up to 1 1/4
- Easy to use and robust
- Extensive range of dies to suit crimping of hydraulic hoses
- Easy set up and maintenance
- Fast and reliable
- Digital micrometer
- Model shown equipped with SC control panel

CONTROL OPTIONS AVAILABLE ON REQUEST



SC

SCE

SCS

TECHNICAL SPECIFICATIONS

| | |
|--|-------------------------------------|
| CAPACITY* | NOISE LEVEL |
| 2wb / 4ws: 1 1/4 max. | <70 dB A |
| Industrial: 1 1/2 max. | MOTOR |
| CRIMP RANGE | 4.0 kW |
| 4 - 70 mm (0.157 - 2.756") | VOLTAGES |
| CRIMP FORCE | 220/240 V, 1Ph, 50/60 Hz |
| 137 t | 220/240 V, 3Ph, 50 Hz |
| OPENING WITH DIES | 380/415 V, 3Ph, 50 Hz |
| +28 mm (+1.102") | 208/240 V, 3Ph, 60 Hz |
| COMPLETE OPENING | Other voltages available on request |
| 108 mm (4.252") | DIMENSIONS |
| MASTER DIE LENGTH | 765 x 400 x 650 mm |
| 75 mm (2.953") | (30 x 16 x 26") |
| STANDARD DIES | NET WEIGHT |
| 14, 16, 18, 20, 22, 24, 27, 30, 33, 36, 39, 42, 45, 48, 51 | 160 kg (353 lb) |

*Indicative capacities depending on hose and fitting type.

OPTIONAL



Maintenance Kit



Die Storage Panel



Die Storage Table



Die Storage Table EVO



Electrical Footswitch



Aluminium Quick Change Gun



Digital Caliper



Die Sets for Brake & Air Conditioning Hoses



Marking Dies



Die Storage Panel EVO

MB 240 EVO

PROFESSIONAL WORKSHOP BENCHTOP



KEY FEATURES

- Crimp force of up to 240 tonnes for hoses up to 2"
- Easy to use and robust
- Radial die movement
- High crimping force
- Extensive range of dies to suit crimping of hydraulic hoses
- Easy set up and maintenance
- Fast and reliable
- Model shown equipped with SCE control panel

CONTROL OPTIONS AVAILABLE ON REQUEST



SC

SCE

SCS

TECHNICAL SPECIFICATIONS

| | |
|--|-------------------------------------|
| CAPACITY* | NOISE LEVEL |
| 2wb: 2" max. | <70 dB A |
| 4ws: 2" max. | MOTOR |
| 6ws: 1"1/2 max. | 4.0 kW |
| CRIMP RANGE | VOLTAGES |
| 4 - 76 mm (0.157 - 2.992") | 220/240 V, 1Ph, 50/60 Hz |
| CRIMP FORCE | 220/240 V, 3Ph, 50 Hz |
| 240 t | 380/415 V, 3Ph, 50 Hz |
| OPENING WITH DIES | 208/240 V, 3Ph, 60 Hz |
| +38 mm (+1.496") | Other voltages available on request |
| COMPLETE OPENING | DIMENSIONS |
| 118 mm (4.645") | 765 x 400 x 650 mm |
| MASTER DIE LENGTH | (30 x 16 x 26") |
| 100 mm (3.937") | NET WEIGHT |
| STANDARD DIES | 165 kg (364 lb) |
| 14, 16, 18, 20, 22, 24, 27, 30, 33, 36, 39, 42, 45, 48, 51, 57, 63, 66, 70 | |

*Indicative capacities depending on hose and fitting type.

OPTIONAL

Maintenance Kit

Electrical Footswitch

Die Storage Panel

Die Storage Table

Die Storage Table EVO

Digital Caliper

Aluminium Quick Change Gun

Mechanical Backstop

Die Sets for Brake & Air Conditioning Hoses

Marking Dies

Die Storage Panel EVO

MB 350 EVO - L

FULL SERVICE WORKSHOP BENCHTOP; VERY HIGH CRIMP FORCE



KEY FEATURES

- Crimp force up to 350 tonnes for hoses up to 3"
- Easy to use and robust
- Automatic maintenance alerts
- Groove for 90° long drop fittings
- Also available as S CRIMP 350 L with 4.0 kW motor
- Model shown equipped with SCS control panel

CONTROL OPTIONS AVAILABLE ON REQUEST



SC

SCE

SCS

TECHNICAL SPECIFICATIONS

| | |
|--|--|
| CAPACITY* | NOISE LEVEL |
| 2wb: 3" max. | <70 dB A |
| Industrial: 4" max. | MOTOR |
| 4ws: 2" max. | 5.5 kW / 4 kW |
| 6ws: 2" max. | VOLTAGES |
| CRIMP RANGE | 220/240 V, 3Ph, 50 Hz |
| 4 - 130 mm (0.157 - 5.118") | 380/415 V, 3Ph, 50 Hz |
| CRIMP FORCE | 208/240 V, 3Ph, 60 Hz |
| 350 t | 380/415 V, 3Ph, 60 Hz |
| OPENING WITH DIES | DIMENSIONS |
| +54 mm (+2.125") | 765 x 400 x 750 mm |
| COMPLETE OPENING | (30 x 16 x 30") |
| 180 mm (7.086") | NET WEIGHT |
| MASTER DIE LENGTH | 262 kg (578 lb) |
| 115 mm (4.523") | TECHNICAL FEATURES |
| STANDARD DIES | -Automatic maintenance alerts |
| 14, 16, 18, 20, 22, 24, 27, 30, 33, 36, 39, 42, 45, 48, 51, 57, 63, 66, 70, 73, 76 | -Cylinder protection against dust - durable design |
| | -Also available as S CRIMP 350 EVO L with 4.0 kW Motor |

*Indicative capacities depending on hose and fitting type.

OPTIONAL



GOLDENCRIMP 420 EVO

ASSEMBLING FOR FIELD REPAIR BENCHTOP CRIMPING MACHINE



KEY FEATURES

- High crimping force of 420 tonnes
- Robust design for transport and operation in harsh environments
- Protected cylinders for trouble-free operation in high dust environments
- Large opening suitable for large bore hoses
- Easy maintenance due to dust collector foam pads
- Model shown equipped with SC control panel

CONTROL OPTIONS AVAILABLE ON REQUEST



SC



SCE



SCS

TECHNICAL SPECIFICATIONS

CAPACITY*

6ws: 3" max.
Industrial: 4" max.

CRIMP RANGE

4 - 130 mm (0.157 - 5.118")

CRIMP FORCE

420 t

OPENING WITH DIES

+48 mm (+1.9 inch)

COMPLETE OPENING

178 mm (7.0 inch)

MASTER DIE LENGTH

120 mm (4.724 inch)

STANDARD DIES

14, 16, 18, 20, 22, 24, 27, 30, 33, 36, 39, 42, 45, 48, 51, 57, 63, 66, 70, 73, 76

NOISE LEVEL

<70 dB A

MOTOR

5.5 kW

VOLTAGES

220/240 V, 3Ph, 50 Hz

380/415 V, 3Ph, 50 Hz

208/240 V, 3Ph, 60 Hz

380/415 V, 3Ph, 60 Hz

DIMENSIONS

765 x 500 x 800 mm

(30 x 20 x 32")

PACKAGING

745 x 1150 x 945 mm
(29 x 45 x 37")

NET WEIGHT

395 kg (871 lb)

*Indicative capacities depending on hose and fitting type.

OPTIONAL



Maintenance Kit



Electrical Footswitch



Die Storage Panel



Die Storage Table



Die Storage Table EVO



Digital caliper



Aluminium Quick Change Gun



Mechanical Backstop



Die Sets for Brake & Air Conditioning Hoses



Marking Dies



Die Storage Panel EVO

GOLDENCRIMP 450

ASSEMBLING FOR FIELD REPAIR BENCHTOP CRIMP MACHINE



KEY FEATURES

- High crimp force
- Large opening
- Wide family of dies for industrial hoses
- Long master dies
- Robust - designed for harsh environments
- Low noise level
- Easy die set-up with ergonomic gun
- Metallic guard for the set stop

STANDARD



Electrical Footswitch



Aluminium Quick Change Gun

TECHNICAL SPECIFICATIONS

| | |
|--|-----------------------|
| CAPACITY* | NOISE LEVEL |
| 6ws: 3" max. | <65 dB A |
| Industrial: 6" max. | MOTOR |
| CRIMP RANGE | 5.5 kW |
| 4 - 180 mm (0.157 - 7.087") | VOLTAGES |
| CRIMP FORCE | 220/240 V, 3Ph, 50 Hz |
| 450 t | 380/415 V, 3Ph, 50 Hz |
| OPENING WITH DIES | 208/240 V, 3Ph, 60 Hz |
| +70 mm (+2.755") | 380/415 V, 3Ph, 60 Hz |
| COMPLETE OPENING | DIMENSIONS |
| 230 mm (9.055") | 830 x 775 x 1450 mm |
| MASTER DIE LENGTH | (33 x 31 x 57") |
| 125 mm (4.921") | PACKAGING |
| STANDARD DIES | 1120 x 1020 x 1770 mm |
| 16, 18, 20, 22, 24, 27, 30, 33, 36, 39, 42, 45, 48, 51, 57, 63, 66, 70, 73, 76 | (44 x 40 x 70") |
| | NET WEIGHT |
| | 720 kg (1587 lb) |

*Indicative capacities depending on hose and fitting type.

OPTIONAL



Marking Dies



Die Sets for Brake & Air Conditioning Hoses

MRV 137 EVO R

FIELD SERVICE & MOBILE WORKSHOP
MOBILE VAN



KEY FEATURES

- Swivel head for an ergonomic position
- Head axis perpendicular to the operator
- Compact and lightweight

TECHNICAL SPECIFICATIONS

| | |
|--|---------------------|
| CAPACITY* | MOTOR |
| 2wb / 4ws: 1 ¼" max. | 2.0 kW |
| Industrial: 1 1/2" max. | VOLTAGES |
| CRIMP RANGE | 12 V |
| 4 - 70 mm (0.157 - 2.756") | 24 V |
| CRIMP FORCE | DIMENSIONS |
| 137 t | 392 x 398 x 486 mm |
| OPENING WITH DIES | (15 x 16 x 19") |
| +28 mm (+1.102") | PACKAGING |
| COMPLETE OPENING | 800 x 600 x 830 mm |
| 108 mm (4.252") | (31 x 24 x 33") |
| MASTER DIE LENGTH | NET WEIGHT |
| 75 mm (2.952") | 73 kg (161 lb) |
| STANDARD DIES | GROSS WEIGHT |
| 14, 16, 18, 20, 22, 24, 27, 30, 33, 36, 39, 42, 45, 48, 51 | 90 kg (199 lb) |
| NOISE LEVEL | |
| <72 dB A | |

*Indicative capacities depending on hose and fitting type.

OPTIONAL

Maintenance Kit

Battery

Aluminium Quick

Die Storage Panel

Marking Dies

Die Sets for Brake & Air Conditioning Hoses

Front Die Storage

Die Storage Panel EVO R

MV 137 / 137 L

**FIELD SERVICE & MOBILE WORKSHOP
MOBILE VAN**



KEY FEATURES

- Robust and compact design
- Lightweight
- High crimping speed
- Suitable also for 90° elbow fittings
- Cylinder protection
- Remote head mounting option possible



TECHNICAL SPECIFICATIONS

| | |
|--|---------------------------------|
| CAPACITY* | NOISE LEVEL |
| 2wb / 4ws: 1"¼ max. | 72 dB A |
| Industrial: 1"½ max. | MOTOR |
| CRIMP RANGE | 2.0 kW |
| 4 - 70 mm (0.157 - 2.756") | VOLTAGES |
| CRIMP FORCE | 12/24 V |
| 137 t | DIMENSIONS |
| OPENING WITH DIES | 650 x 550 x 610 mm |
| +28 mm (+1.102") | 250 x 320 x 300 mm** |
| COMPLETE OPENING | PACKAGING |
| 108 mm (4.252") | 800 x 600 x 830 mm |
| MASTER DIE LENGTH | NET WEIGHT |
| 75 mm (2.952") | 103 kg / 86 kg** |
| STANDARD DIES | GROSS WEIGHT |
| 14, 16, 18, 20, 22, 24, 27, 30, 33, 36, 39, 42, 45, 48, 51 | 120 kg / 102 kg** |
| | DIMENSIONS OF POWER PACK |
| | 440 x 320 x 320 mm** |

*Indicative capacities depending on hose and fitting type.
** L Version

OPTIONAL



Maintenance Kit



Battery



Aluminium Quick Change Gun



Die Storage Panel



Marking Dies



Die Sets for Brake & Air Conditioning Hoses

MV 240 / 240 L

FIELD SERVICE & MOBILE WORKSHOP
MOBILE VAN



KEY FEATURES

- Robust design
- Ergonomic micrometer
- High crimping speed
- Radial movement of the dies
- Cylinder protection
- Remote head mounting option possible



TECHNICAL SPECIFICATIONS

| | |
|--|---------------------------------|
| CAPACITY* | MOTOR |
| 2wb: 2" max. | 2.0 kW |
| 4ws: 2" max. | VOLTAGES |
| 6ws: 1" 1/4 max. | 12 / 24 V |
| CRIMP RANGE | 220/240 V, 3Ph, 50 Hz |
| 4 - 76 mm (0.157 - 2.992") | 380/415 V, 3Ph, 50 Hz |
| CRIMP FORCE | 208/240 V, 3Ph, 60 Hz |
| 240 t | DIMENSIONS |
| OPENING WITH DIES | 650 x 550 x 670 mm |
| +38 mm (+1.496") | 320 x 360 x 350 mm** |
| COMPLETE OPENING | PACKAGING |
| 118 mm (4.646") | 800 x 600 x 830 mm |
| MASTER DIE LENGTH | NET WEIGHT |
| 100 mm (3.937") | 118 kg / 130 kg** |
| STANDARD DIES | GROSS WEIGHT |
| 14, 16, 18, 20, 22, 24, 27, 30, 33, 36, 39, 42, 45, 48, 51, 57, 63, 66, 70 | 180 kg / 180 kg** |
| NOISE LEVEL | DIMENSIONS OF POWER PACK |
| 72 dB A | 440 x 320 x 320 mm** |

*Indicative capacities depending on hose and fitting type.
** L Version

OPTIONAL



Maintenance Kit



Battery



Aluminium Quick Change Gun



Die Storage Panel



Marking Dies



Die Sets for Brake & Air Conditioning Hoses



Front Die Storage

MV 350 / 350 L

FIELD SERVICE & MOBILE / CONTAINER
WORKSHOP MOBILE VAN



KEY FEATURES

- Robust design
- Large opening
- High crimping force
- Ergonomic micrometer
- High crimping speed
- Radial movement of the dies
- Cylinder protection
- Remote head mounting option possible

TECHNICAL SPECIFICATIONS

| | |
|--|---------------------------------|
| CAPACITY* | MOTOR |
| 2wb: 3" max. | 2.0 kW |
| 4ws: 2" max. | VOLTAGES |
| 6ws: 2" max. | 12 V |
| Industrial: 4" | 24 V |
| CRIMP RANGE | 220/240 V, 3Ph, 50 Hz |
| 4 - 130 mm (0.157 - 5.118") | 380/415 V, 3Ph, 50 Hz |
| CRIMP FORCE | 208/240 V, 3Ph, 60 Hz |
| 350 t | 380/415 V, 3Ph, 60 Hz |
| OPENING WITH DIES | DIMENSIONS |
| +54 mm (+2.125") | 650 x 550 x 750 mm |
| COMPLETE OPENING | 485 x 435 x 390 mm** |
| 180 mm (7.086") | PACKAGING |
| MASTER DIE LENGTH | 800 x 600 x 830 mm |
| 115 mm (4.528") | NET WEIGHT |
| STANDARD DIES | 210 kg / 215 kg** |
| 14, 16, 18, 20, 22, 24, 27, 30, 33, 36, 39, 42, 45, 48, 51, 57, 63, 66, 70, 73, 76 | GROSS WEIGHT |
| NOISE LEVEL | 260kg / 230 kg* |
| <65 dB A | DIMENSIONS OF POWER PACK |
| | 605 x 318 x 325 mm |

*Indicative capacities depending on hose and fitting type.
** L Version

OPTIONAL



Maintenance Kit



Battery



Aluminium Quick Change Gun



Die Storage Panel



Marking Dies



Die Sets for Brake & Air Conditioning Hoses



Front Die Storage

N CRIMP 70 / 80

PEP 108/158
EXPERT SERVICE LINE



KEY FEATURES

- Easy to use
- Accurate
- Robust die holder system
- Semi automatic opening
- High speed
- Large opening and capacity
- Available with SCE control panel

CONTROL OPTIONS AVAILABLE ON REQUEST



TECHNICAL SPECIFICATIONS

| | N CRIMP 70 | N CRIMP 80 |
|---------------------------|--|--------------------------------|
| CAPACITY* | 1-1/2" | 3" |
| CRIMP RANGE | 4 - 60 mm (0.157 - 2.362") | 4 - 110 mm (0.157 - 4.331") |
| CRIMP FORCE | 70 t | 80 t |
| COMPLETE OPENING | 108 mm (4.252") | 156 mm (6.142") |
| OPENING WITH DIES | +28 mm (+1.102 ") | +38 mm (1.496") |
| MASTER DIE LENGTH | 100 mm (3.937") | 125 mm (4.921") |
| MOTOR | 4 kw | |
| VOLTAGES | 230V, 3Ph 400V, 3 Ph | |
| MACHINE DIMENSIONS | 1120 x 560 x 940 mm (44 x 22 x 37") | |
| PACKAGING | 1200 x 850 x 1500 mm (47 x 33 x 59 ") | |
| NET WEIGHT | 380 kg | 450 kg |

*Indicative capacities depending on hose and fitting type

OPTIONAL



Automatic
Central Greasing
Pump



Pre-crimping
Die Sets

MS 140

**ASSEMBLING FOR MASS PRODUCTION
STAND TYPE CRIMP MACHINE**



KEY FEATURES

- Safe Crimp System (SCS) control
- Large production capacity (small/medium bore)
- Low noise level
- Precise
- Robust
- Available with SCE control panel

STANDARD



Aluminium Quick Change Gun



SCS Safe Crimp System



Mirror



Electrical Footswitch



Die Storage

TECHNICAL SPECIFICATIONS

| | |
|--|-----------------------|
| CAPACITY* | NOISE LEVEL |
| 2wb: 2" max. | <65 dB A |
| 4ws: 1" 1/4 max. | MOTOR |
| Industrial: 2"1/2 max. | 4 kW |
| CRIMP RANGE | VOLTAGES |
| 4 - 70 mm (0.157 - 2.756") | 220/240 V, 3Ph, 50 Hz |
| CRIMP FORCE | 380/415 V, 3Ph, 50 Hz |
| 140 t | 208/240 V, 3Ph, 60 Hz |
| OPENING WITH DIES | DIMENSIONS |
| +45 mm (+1.772") | 890 x 690 x 1380 mm |
| COMPLETE OPENING | (35 x 27 x 54") |
| 125 mm (4.921") | PACKAGING |
| MASTER DIE LENGTH | 1120 x 1020 x 1725 mm |
| 80 mm (3.150") | (44 x 40 x 68") |
| STANDARD DIES | NET WEIGHT |
| 14, 16, 18, 20, 22, 24, 27, 30, 33, 36, 39, 42, 45, 48 | 600 kg (1323 lb) |

*Indicative capacities depending on hose and fitting type.

OPTIONAL



Barcode Reader



Mechanical Backstop



Digital Caliper

MS 320

**ASSEMBLING FOR MASS PRODUCTION
STAND TYPE CRIMP MACHINE**



KEY FEATURES

- High crimp force
- Large opening
- Safe Crimp System (SCS) control
- Wide family of dies for industrial hoses
- Robust structure
- Fast and ergonomic
- Low noise level

STANDARD



Aluminium Quick Change Gun



SCS Safe Crimp System



Mirror



Electrical Footswitch



Die Storage



Pushing panel

TECHNICAL SPECIFICATIONS

CAPACITY*

2wb: 3" max.
4ws: 2" max.
6ws: 2" max.
Industrial: 4" max.

CRIMP RANGE

4 - 130 mm (0.157 - 5.118")

CRIMP FORCE

320 t

OPENING WITH DIES

+80 mm (+3.149")

COMPLETE OPENING

207 mm (8.149")

MASTER DIE LENGTH

100 mm (3.937")

STANDARD DIES

14, 16, 18, 20, 22, 24, 27, 30, 33, 36, 39, 42, 45, 48, 51, 57, 63, 66, 70, 73, 76

NOISE LEVEL

<65 dB A

MOTOR

5.5 kW / 7.5 kW (Fast Version)

VOLTAGES

220/240 V, 3Ph, 50 Hz
380/415 V, 3Ph, 50 Hz
208/240 V, 3Ph, 60 Hz
380/415 V, 3Ph, 60 Hz

DIMENSIONS

1200 x 1000 x 1650 mm
(47 x 39 x 64")

PACKAGING

1400 x 1100 x 1960 mm
(55 x 43 x 77")

NET WEIGHT

1370 kg (3020 lb)

GROSS WEIGHT

1570 kg (3461 lb)

*Indicative capacities depending on hose and fitting type.

OPTIONAL



Die Storage Panel



Marking Dies



Back View Camera



Digital Caliper



Mechanical Backstop



Side Table



Die Sets for Brake & Air Conditioning Hoses



Barcode Reader

MS 480

**ASSEMBLING FOR MASS PRODUCTION
STAND TYPE CRIMP MACHINE**



KEY FEATURES

- High crimp force
- Large opening
- Safe Crimp System (SCS) control
- Wide family of dies for industrial hoses
- Long master dies
- Robust
- Low noise level

STANDARD

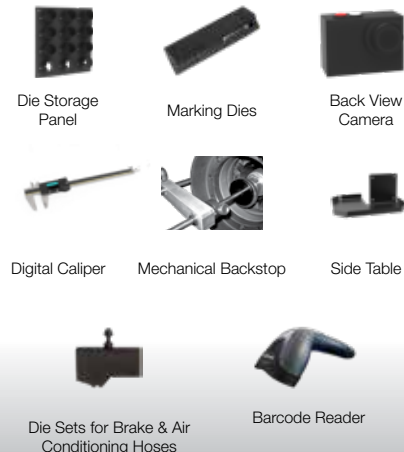


TECHNICAL SPECIFICATIONS

| | |
|--|--|
| CAPACITY* | NOISE LEVEL |
| 6ws: 3" max. Industrial: 4" max. | <65 dB A |
| CRIMP RANGE | MOTOR |
| 4 - 160 mm (0.157 - 6.299") | 5.5 kW |
| CRIMP FORCE | VOLTAGES |
| 480 t | 220/240 V, 3Ph, 50 Hz 380/415 V, 3Ph, 50 Hz |
| OPENING WITH DIES | 208/240 V, 3Ph, 60 Hz 380/415 V, 3Ph, 60 Hz |
| +85 mm (+3.346") | DIMENSIONS |
| COMPLETE OPENING | 1300 x 1050 x 1700 mm (51 x 41 x 67") |
| 212 mm (8.346") | PACKAGING |
| MASTER DIE LENGTH | 1400 x 1100 x 1960 mm (55 x 43 x 77") |
| 125 mm (4.921") | NET WEIGHT |
| STANDARD DIES | 1675 kg (3693 lb) |
| 14, 16, 18, 20, 22, 24, 27, 30, 33, 36, 39, 42, 45, 48, 51, 57, 63, 66, 70, 73, 76 | GROSS WEIGHT |
| | 1890 kg (4167 lb) |

*Indicative capacities depending on hose and fitting type.

OPTIONAL



MS 800

**ASSEMBLING FOR LARGE BORE HOSES
STAND TYPE CRIMP MACHINE**



KEY FEATURES

- Designed for heavy duty large bore hydraulic hoses
- High power and speed
- Ergonomically designed for large bore hoses
- Safe Crimp System (SCS) for maximum reliability during the crimping process
- Large opening up to 8"
- Long master dies
- Very high crimping force

STANDARD



Electrical Footswitch



Hose Support



SCS Safe Crimp System



Back View Camera

TECHNICAL SPECIFICATIONS

CAPACITY*

4ws: 4" max.
6ws: 3" max.
Industrial: 6"

MOTOR

7.5 kW

VOLTAGES

380/415 V, 3Ph, 50 Hz

CRIMP RANGE

4 - 230 mm (0.157 - 9.055")

DIMENSIONS

1400 x 1400 x 2060 mm
(55 x 55 x 81")

CRIMP FORCE

800 t

NET WEIGHT

4300 kg (9480 lb)

OPENING WITH DIES

+100 mm (+3.937")

GROSS WEIGHT

5000 kg (11023 lb)

COMPLETE OPENING

347 mm (13.661")

TECHNICAL FEATURES

MASTER DIE LENGTH

180 mm (7.087")

Machine platform equipped with rollers to support the hose at working height (1100 mm) in order to handle large bore hoses more easily

NOISE LEVEL

< 70 dB A

Supplied as standard: Intermediate dies 250/130 and 130/80

*Indicative capacities depending on hose and fitting type.

OPTIONAL



Aluminium Quick Change Gun



Back View Camera



Double Footswitch



Die Storage Panel



Digital Caliper

MS 320 OPEN HEAD

XXL WORKSHOP



KEY FEATURES

- Unique on market
- Lateral opening
- No limit on end connection diameter
- Easy to use
- Separated power pack
- Integrated safety system

STANDARD



Electrical Footswitch



Die Storage

TECHNICAL SPECIFICATIONS

| | |
|-----------------------------|----------------------------------|
| CAPACITY* | VOLTAGES |
| Industrial: 6" | 230 V, 3 Ph |
| CRIMP RANGE | 400 V, 3 Ph |
| 4 - 230 mm (0.157 - 9.055") | MACHINE DIMENSIONS |
| CRIMP FORCE | 1265 x 680 x 1800 mm |
| 320 t | (50 x 27 x 71") |
| OPENING WITH DIES | POWER PACK DIMENSIONS |
| +55 mm (+2.165") | 890 x 800 x 1050 mm |
| COMPLETE OPENING | (35 x 31 x 41") |
| 260 mm (10.236") | MACHINE WEIGHT |
| LATERAL OPENING | 1700 kg (3748 lb) |
| 247 mm (9.724") | POWER PACK WEIGHT |
| MASTER DIE LENGTH | 400 kg (882 lb) |
| 125 mm (4.921") | TECHNICAL FEATURES |
| MOTOR | Die sizes available upon request |
| 5.5 kW | |

*Indicative capacities depending on hose and fitting type.

OPTIONAL



Double Footswitch



SCS
Safe Crimp System

MS 400 INDUSTRIAL

XXL WORKSHOP



KEY FEATURES

- High crimping force
- Ergonomic operation
- Economic solution
- Large opening
- Robust
- Easy set up
- Versatile
- Adjustable crimping working position

STANDARD



Remote Control Ergonomic Micrometer SC

TECHNICAL SPECIFICATIONS

| | |
|-----------------------------|----------------------------------|
| CAPACITY* | MOTOR |
| Industrial: 6" | 5.5 kW |
| CRIMP RANGE | VOLTAGES |
| 4 - 210 mm (0.157 - 8.268") | 230 V, 3 Ph |
| CRIMP FORCE | 400 V, 3 Ph |
| 400 t | DIMENSIONS |
| OPENING WITH DIES | 1100 x 900 x 1550 mm |
| +60 mm (+2.362") | (43 x 35 x 61") |
| COMPLETE OPENING | WEIGHT |
| 285 mm (11.221") | 750 kg (165 lbs) |
| MASTER DIE LENGTH | TECHNICAL FEATURES |
| 150 mm (5.906") | Die sizes available upon request |

*Indicative capacities depending on hose and fitting type.

OPTIONAL



Aluminium Quick Change Gun

MS 450-200/P

XXL WORKSHOP



Version with Remote Head



Production Version with "silent" central unit

KEY FEATURES

- High crimp force (450 tonnes)
- Large opening
- Wide family of dies for industrial hoses
- Long master dies
- Robust & Ergonomic
- Metallic guard for the set stop
- Separated crimping head allowing flexible workshop arrangements
- Production options:
 - "silent" central unit with 50 L tank
 - Table with racks EVO
 - 3 control panels available

CONTROL OPTIONS AVAILABLE ON REQUEST



SC



SCE



SCS

TECHNICAL SPECIFICATIONS

| | |
|---|-----------------------|
| CAPACITY* | MOTOR |
| Industrial: 4" & 6" | 5.5 kW |
| CRIMP RANGE | VOLTAGES |
| 4 - 180 mm (0.157 - 7.087") | 220/240 V, 3Ph, 50 Hz |
| CRIMP FORCE | 380/415 V, 3Ph, 50 Hz |
| 450 t | 208/240 V, 3Ph, 60 Hz |
| OPENING WITH DIES** | 380/415 V, 3Ph, 60 Hz |
| +70 mm (+2.755") | DIMENSIONS |
| MASTER-DIES OPENING*** | 830 x 775 x 1450 mm |
| 270 mm (10.629") | (33 x 31 x 57") |
| MASTER DIE LENGTH | PACKAGING |
| 125 mm (4.921") | 1120 x 1020 x 1770 mm |
| STANDARD DIES | (44 x 40 x 70") |
| 14, 16, 18, 20, 22, 24, 27, 30, 33, 36, 39, 42, 45, 48, 51, 57, 63, 66, 70, 73, 76; | NET WEIGHT |
| Dies up to 180 mm available on request. | 450 kg (992 lb) |
| | 750 kg (pro version) |

*Indicative capacities depending on hose and fitting type.

** working stroke 24 mm

*** Full passage 230 mm

OPTIONAL



Die Storage Panel



Die Storage Table EVO



Digital Caliper



Aluminium Quick Change Gun



Electrical Footswitch



Marking Dies



Die Sets for Brake & Air Conditioning Hoses

MS 450 XL

8" HOSE CRIMPER



KEY FEATURES

- High crimping force
- Large opening for hoses up to 8" and flanges up to ANSI 150 PSI
- Diameter adjustment is controlled by SCS
- Possibility to install eccentric and/or deformed dies

STANDARD

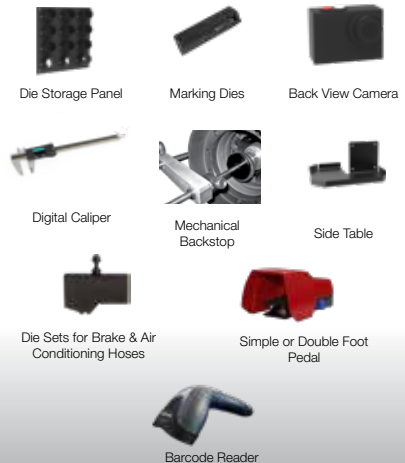


TECHNICAL SPECIFICATIONS

| | |
|---|-----------------------------------|
| CAPACITY* | COMPLETE OPENING |
| Industrial: 8" | 360 mm (14.173") |
| MAX CRIMPING DIAMETER | MAXIMUM DIE LENGTH |
| 300 mm (11.811") (with special dies) | 130 mm (5.118") |
| CRIMP FORCE | GROSS WEIGHT |
| 450 t | 2900 kg (6393 lb) |
| OPENING WITH DIES | TECHNICAL FEATURES |
| + 130 mm (5.118") | Die sizes available upon request. |

*Indicative capacities depending on hose and fitting type.

OPTIONAL



XL CRIMP 550/XL CRIMP 550-16

XXL WORKSHOP

KEY FEATURES

- Very large opening
- Fixed bottom die
- Long dies available
- High crimping force
- Symmetric machine
- Low working height
- Ergonomic
- Safe Crimp System (SCS)
- Step crimping capability with SCS



STANDARD



SCS Safe Crimp System



Die Storage

TECHNICAL SPECIFICATIONS

| | XL CRIMP 550 | XL CRIMP 550-16 |
|------------------------------|--|---|
| CAPACITY* | Industrial: 12" | Industrial: 16" |
| CRIMP FORCE | 550 t | |
| COMPLETE OPENING | 495 mm (19.2488") | 650 mm (25.591") |
| OPENING WITH DIES | +130 mm (+5.118 ") | +160 mm (6.299") |
| MASTER DIE LENGTH | 200 mm (7.874") | |
| MOTOR | 5.5 kW | |
| VOLTAGES | 230 V, 3 Ph 400 V, 3 Ph | |
| MACHINE DIMENSIONS | 1300 x 1050 x 2230 mm (51 x 41 x 88") | 1650 x 1830 x 2660 mm (65 x 72 x 105") |
| POWER PACK DIMENSIONS | 800 x 800 x 1650 mm (31 x 31 x 65") | |
| MACHINE WEIGHT | 4000 kg (8818 lb) | 5300 kg (11684 lb) |
| POWER PACK WEIGHT | 400 kg (882 lb) | |
| TECHNICAL FEATURES | Die sizes available upon request | |

*Indicative capacities depending on hose and fitting type.

OPTIONAL



Back View Camera

MOBILE WORKSHOP

**ON-SITE REPAIR
2-IN-1 MOBILE SOLUTION**



Version for hoses 2" Max.

KEY FEATURES

- Mobile solution
- 2-in-1 cutting and crimping
- Rotative head
- Integrated cutting machine
- Scalloped blade for efficient cuts
- Built-in pedal and dust collector
- Storage for hoses, fittings and dies

TECHNICAL SPECIFICATIONS

| | VERSION 1"1/4 | VERSION 2" |
|---------------------------|--|--|
| CAPACITY* | 4 ws: 1"1/4 max. | 4 ws: 2"max. |
| CRIMP FORCE | 137 t | 240 t |
| COMPLETE OPENING | 108 mm (4.252") | 118 mm (4.646") |
| OPENING WITH DIES | +28 mm (+1.102 ") | +38 mm (1.496") |
| MASTER DIE LENGTH | 75 mm (2.953") | 100 mm (3.937") |
| MOTOR | 2.2 kW (crimping machine) 3 kW (stand type cutting machine) | |
| VOLTAGES | 220/240 V-1 Ph-50 Hz 220/240 V-1 Ph-60 Hz 380/415 V-3 Ph + N-50 Hz | |
| MACHINE DIMENSIONS | 2520 x 900 x 1670 mm (99 x 35 x 66") | 2487 x 810 x 1370 mm (98 x 32 x 54") |
| MACHINE WEIGHT | 382 kg (842 lb) | 433 kg (955 lb) |
| STANDARD DIES | 14, 16, 18, 20, 22, 24, 27, 30, 33, 36, 39, 42, 45, 48, 51 | 14, 16, 18, 20, 22, 24, 27, 30, 33, 36, 39, 42, 45, 48, 51, 57, 63, 66, 70 |

*Indicative capacities depending on hose and fitting type

OPTIONAL



Aluminium Quick Change Gun

ACCESSORIES AND TOOLS

SAFE CRIMP (SC) SMART CONTROL PANEL

A basic smart control panel, which includes maintenance functions essential for keeping the machine in good condition.

Maintenance functions include:

- **2 Counters:** 1 daily counter and 1 machine cycle counter
- **3 LED Indicator Lights:** 1 for daily maintenance, 1 for advanced maintenance and 1 for expert maintenance
- **Semi-Automatic Function:** The semi-automatic opening is ideal for serial assemblies as it can be adjusted specifically to allow the fitting to pass through the dies with minimal clearance, saving energy by reducing the cycle time.



SAFE CRIMP ELECTRICAL PANEL (SCE)

A modern touch screen with electronic buttons, which includes maintenance functions essential for keeping the machine in good condition.

Maintenance functions include:

- **Functions of the SC**
- **Electronic micrometer:** with the possibility to save up to 75 hose configurations and automatic die selection. Recording of 35 die-sets
- **Caliper option:** for automatic correction of the crimping diameter



ACCESSORIES AND TOOLS

SAFE CRIMP SYSTEM (SCS)



Benefits of Safe Crimp System (SCS) control for hose assembly activity:

Friendly and easy setting of crimping parameters including:

- › Pre-set of crimp Ø calibration to compensate ferrule elastic rebound
- › Reminder of dies to be used
- › Easy automatic opening setting

Storage of recurrent and customised crimp recipes: favourite crimp assemblies:

- › Short cuts for faster setting
- › No crimp Ø re-adjusting
- › Possibility to download your customised recipes by USB port and save on separate computer (CSV file)

Production counter for batch quantity control:

- › Quality monitoring through automatic crimp control
(Available on certain production and industrial machines)
- › Continuous measurement of crimping pressure with real time display
(Available on certain production and industrial machines / Optional on benchtop machine screens)
- › Countdown of crimps to be performed, monitored according to the preset pressure range
(Available on certain production and industrial machines / Optional on benchtop machine screens)

Operator identification

(Log in / log out)

Maintenance Warnings

INTRODUCTION



Designed to apply proof-pressure testing to assembled hoses, our test benches allow you to test and certify hose assemblies up to 2,000 bar.

MTB 2000 L

TEST BENCH, PROOF PRESSURE & CERTIFY STAND TYPE MACHINE

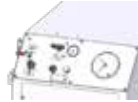


Model shown L

KEY FEATURES

- Easy to use and robust
- Safe: Steel Compartment, polycarbonate transparent window and metal mesh
- Large testing area for up to 6 hoses
- Variable pressure up to 2000 bar

AVAILABLE VERSIONS



Power Unit M



Power Unit E

TECHNICAL SPECIFICATIONS

| | |
|---|---|
| INDICATIVE CAPACITY | PACKAGING (TANK) |
| 3/16" - 2" | 1600 x 1200 x 1280 mm (63 x 47 x 50") |
| HOSE CONNECTION | PACKAGING (PANEL) |
| 6 maximum | 1000 x 1200 x 1280 mm (39 x 47 x 50") |
| AIR CONSUMPTION | NET WEIGHT |
| 1000 L/min | 430 kg (948 lb) |
| OPENING/CLOSING TIME | GROSS WEIGHT |
| 10-14 seconds | 500 kg (1102 lb) |
| MAX PRESSURE | TECHNICAL FEATURES |
| 2000 bar (29000 psi) | Minimum compressed air input 8.5 bar (123 psi) |
| INNER TANK CAPACITY | |
| 1700 x 790 x 200 mm (67 x 31 x 8") | |
| DIMENSIONS (PANEL) | |
| 700 x 1200 x 1220 mm (28 x 47 x 48") | |

FEATURES AND OPTIONS

| | |
|--------------------------------------|--|
| DISPLAY FEATURES | |
| M | Gauge measurement display |
| E | Numerical measurement display with 4" touch screen and ethernet connection for computer report and light |
| FURTHER OPTIONS | |
| - Autonomous filling pump | |
| - Air blowing system for both models | |

MTB 2000 XL

TEST BENCH, PROOF PRESSURE & CERTIFY STAND TYPE MACHINE



Model shown XL ISD

KEY FEATURES

- Easy to use and robust
- Safe: Steel Compartment, polycarbonate transparent window and metal mesh
- Large testing area for up to 6 hoses
- Variable pressure up to 2000 bar

TECHNICAL SPECIFICATIONS

INDICATIVE CAPACITY

3/16" - 2"

HOSE CONNECTION

6 maximum

AIR CONSUMPTION

1000 L/min

OPENING/CLOSING TIME

10-14 seconds

MAX PRESSURE

2000 bar (29000 psi)

INNER TANK CAPACITY

1400 x 900 x 600 mm
(55 x 35 x 24")

DIMENSIONS (PANEL)

700 x 1200 x 1220 mm
(28 x 47 x 48")

PACKAGING (TANK)

1600 x 1200 x 1280 mm
(63 x 47 x 50")

PACKAGING (PANEL)

1000 x 1200 x 1280 mm
(39 x 47 x 50")

NET WEIGHT

500 kg (1102 lb)

GROSS WEIGHT

600 kg (1323 lb)

TECHNICAL FEATURES

Minimum compressed air input
8.5 bar (123 psi)

Minimum test pressure 250 bar
(3626 psi), with low pressure
option 40 bar (725 psi) (only
for XL ISD)

FEATURES AND OPTIONS

STANDARD OPTIONS

XL ISD:

- Light included
- 10" touch screen panel
- Printer

XL E:

- Light included
- Numerical measurement display with 4" touch screen and ethernet connection for computer report.

FURTHER OPTIONS

- Autonomous filling pump
- Air blowing system for both models

INTRODUCTION



We adapt our machines for use in tubes and automotive applications. Depending on the industrial sector or the requirement, we can offer you technical solutions that meet your specific needs.

TUBE APPLICATIONS



POSSIBLE APPLICATIONS

ECO VERSION - after-market manufacturers

PRO VERSION - OEM manufacturers



Tube Stacking



Tube Reduction Before Drawing



Assembling



Geometrical Deformation



Calibration



Insulator



Cement Rods

Activities:

Greenhouse, scaffolding, urban furniture, playground equipment, hand rails, mechanical construction, furniture, etc.

AVAILABLE OPTIONS



Mechanical Set Stop*



Crimp Head



Special Hydraulic Power Pack



Oil Cooling System



Foot Pedal



Central Greasing System



Computer**

*Accuracy and repeatability optimized

**Pressure and diameters controls, data storage to save recipes, assembly by step, alert maintenance

AUTOMOTIVE APPLICATIONS



POSSIBLE APPLICATIONS



Air Spring



Part Calibration - Shock Absorbers, Pulleys



A/C, Brake Hoses, Control Cables



Automotive Pipe



Airbag Inflators

AVAILABLE OPTIONS



Mechanical Set Stop



Crimp Head



Special Hydraulic Power Pack



Foot Pedal



Central Greasing System



Oil Cooling System



Computer**

*Accuracy and repeatability optimized

**Pressure and diameters controls, data storage to save recipes, assembly by step, alert maintenance

INTRODUCTION



Our machines can be fitted with accessories or additional tools to provide a complete solution that can be upgraded independently as required.

CLEAN KIT

CK 50



TECHNICAL SPECIFICATIONS

NUMBER OF NOZZLES

10 to suit hose ID

COMPRESSED AIR

7 bar

MINIMUM INTERNAL DIAMETER OF HOSE

6 mm

MAXIMUM INTERNAL DIAMETER

51 mm

TECHNICAL FEATURES

Includes 575 pellets & projectile catcher

DV 32 - OEM DECOILER

DV 32



OEM



Our range of decoilers easily adapts to different types of reels, from cardboard to plastic and wood, supporting up to 100kg. Stable and equipped with a hose guiding system, they guarantee greater safety and efficiency.

Manuli Hydraulics decoilers are also suitable for winding loose hoses.

The DV version is supplied with manual cutting and, thanks to its low centre of gravity, guarantees excellent stability and ease of hose loading.

The OEM version, in addition to the advantages of the DV version, has an even more efficient and precise height adjustment, facilitating the insertion of the tube into the cutting machine. The motorised version is available on request.

HOSE DECOILERS - HRD 07 / HRD 08

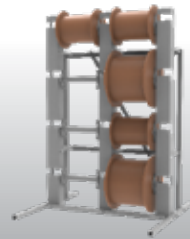


HRD 07

| | |
|----------------------------------|-----------------------|
| MAXIMUM NUMBER OF COILS | 7 |
| MAXIMUM WEIGHT/COIL | 80 kg |
| MINIMUM INTERNAL DIAMETER | 150 mm |
| MAXIMUM EXTERNAL DIAMETER | 800 mm |
| MAXIMUM HEIGHT | 170 mm |
| DIMENSIONS | 1450 x 1500 x 2000 mm |
| NET WEIGHT | 129 kg |

| | |
|----------------------------------|-----------------------|
| MAXIMUM NUMBER OF COILS | 8 |
| MAXIMUM WEIGHT/COIL | 100 kg |
| MAXIMUM EXTERNAL DIAMETER | 600 mm |
| MAXIMUM WIDTH | 450 mm |
| ROLLER TUBE DIAMETER | 60 mm |
| DIMENSIONS | 1450 x 1400 x 2148 mm |
| NET WEIGHT | 150 kg |

The coils are not provided.



HRD 08

INDUSTRIAL DECOILER - IDM 2200



VOLTAGES

400 V, 3Ph, 50 Hz

DIMENSIONS

2600 x 2600 x 1600 mm
(102 x 102 x 63")

NET WEIGHT

714 kg (1570 lb)

MOTOR

3 kW with speed control

POWER TORQUE

1200 N

TABLE DIAMETER

2200 mm

Robust, motorised decoiler for large bore industrial hose. Comes with 6 manually adjustable centring pins, remote stop-start controller and a high torque, 3kW motor with speed control.

MHP 80 EVO

PG. 25

| DESCRIPTION | N° | CRIMP RANGE |
|---|----|-------------|
| DIE SET N. 06 - LENGTH 56 MM | 6 | 06-07 |
| DIE SET N. 07 - LENGTH 56 MM | 7 | 07-08 |
| DIE SET N. 08 - LENGTH 56 MM | 8 | 08-10 |
| DIE SET N. 10 - LENGTH 56 MM | 10 | 10-12 |
| DIE SET N. 12 - LENGTH 56 MM | 12 | 12-14 |
| DIE SET N. 14 - LENGTH 56 MM | 14 | 14-15 |
| DIE SET N. 15 - LENGTH 56 MM | 15 | 15-16 |
| DIE SET N. 16 - LENGTH 56 MM | 16 | 16-18 |
| DIE SET N. 18 - LENGTH 56 MM | 18 | 18-20 |
| DIE SET N. 20 - LENGTH 56 MM | 20 | 20-21 |
| DIE SET N. 21 - LENGTH 56 MM | 21 | 21-22 |
| DIE SET N. 22 - LENGTH 56 MM | 22 | 22-24 |
| DIE SET N. 24 - LENGTH 56 MM | 24 | 24-27 |
| DIE SET N. 27 - LENGTH 56 MM | 27 | 27-30 |
| DIE SET N. 30 - LENGTH 56 MM | 30 | 30-43 |
| KIT 7 DIE SETS MHP80 (16 18 20 22 24 27 30) | - | - |

MHP 110 EVO

PG. 26

| DESCRIPTION | N° | CRIMP RANGE |
|--|----|-------------|
| DIE SET N. 06 - LENGTH 56 MM | 6 | 06-08 |
| DIE SET N. 08 - LENGTH 56 MM | 8 | 08-10 |
| DIE SET N. 10 - LENGTH 56 MM | 10 | 10-12 |
| DIE SET N. 12 - LENGTH 56 MM | 12 | 12-15 |
| DIE SET N. 15 - LENGTH 56 MM | 15 | 15-16 |
| DIE SET N. 16 - LENGTH 56 MM | 16 | 16-18 |
| DIE SET N. 18 - LENGTH 56 MM | 18 | 18-20 |
| DIE SET N. 20 - LENGTH 56 MM | 20 | 20-21 |
| DIE SET N. 21 - LENGTH 56 MM | 21 | 21-22 |
| DIE SET N. 22 - LENGTH 56 MM | 22 | 22-24 |
| DIE SET N. 24 - LENGTH 56 MM | 24 | 24-27 |
| DIE SET N. 27 - LENGTH 56 MM | 27 | 27-30 |
| DIE SET N. 30 - LENGTH 56 MM | 30 | 30-39 |
| KIT 7 DIE SETS MHP110 (16 18 20 22 24 27 30) | - | - |

| DESCRIPTION | N° | CRIMP RANGE |
|--|----|-------------|
| DIE SET N. 4 - LENGTH 56 MM | 4 | 04-05 |
| DIE SET N. 6 - LENGTH 56 MM | 6 | 06-07 |
| DIE SET N. 7 - LENGTH 56 MM | 7 | 07-08 |
| DIE SET N. 8 - LENGTH 56 MM | 8 | 08-10 |
| DIE SET N. 9 - LENGTH 56 MM | 9 | 09-10 |
| DIE SET N. 10 - LENGTH 56 MM | 10 | 10-12 |
| DIE SET N. 12 - LENGTH 56 MM | 12 | 12-15 |
| DIE SET N. 14 - LENGTH 56 MM | 14 | 14-15 |
| DIE SET N. 15 - LENGTH 56 MM | 15 | 15-16 |
| DIE SET N. 16 - LENGTH 56 MM | 16 | 16-18 |
| DIE SET N. 17 - LENGTH 56 MM | 17 | 17-18 |
| DIE SET N. 18 - LENGTH 56 MM | 18 | 18-21 |
| DIE SET N. 20 - LENGTH 56 MM | 20 | 20-21 |
| DIE SET N. 21 - LENGTH 56 MM | 21 | 21-22 |
| DIE SET N. 22 - LENGTH 56 MM | 22 | 22-24 |
| DIE SET N. 24 - LENGTH 56 MM | 24 | 24-27 |
| DIE SET N. 27 - LENGTH 56 MM | 27 | 27-30 |
| DIE SET N. 30 - LENGTH 56 MM | 30 | 30-33 |
| DIE SET N. 33 - LENGTH 70 MM | 33 | 33-36 |
| DIE SET N. 36 - LENGTH 75 MM | 36 | 36-39 |
| DIE SET N. 39 - LENGTH 70 MM | 39 | 39-42 |
| DIE SET N. 42 - LENGTH 70 MM | 42 | 42-45 |
| DIE SET N. 45 - LENGTH 70 MM | 45 | 45-48 |
| DIE SET N. 48 - LENGTH 70 MM | 48 | 48-51 |
| DIE SET N. 51 - LENGTH 75 MM | 51 | 51-57 |
| KIT 4 DIE SETS MHP 137 (16 20 27 33) | - | - |
| KIT 5 DIE SETS MHP 137 (16 20 27 33 39) | - | - |
| KIT 6 DIE SETS MHP 137 (16 18 20 27 33 39) | - | - |
| KIT 6 DIE SETS MHP 137 (16 18 20 22 27 30) | - | - |
| KIT 7 DIE SETS MHP 137 (16 18 20 27 33 39 45) | - | - |
| KIT 9 DIE SETS MHP 137 (16 18 20 24 27 33 39 45 48) | - | - |
| KIT 9 DIE SETS MHP 137 (16 18 20 24 27 33 39 45 48) | - | - |
| KIT 11 DIE SETS MHP 137 (16 18 20 22 24 27 30 33 39 45 48) | - | - |
| KIT 15 DIE SETS H CRIMP 137 (14 16 18 20 22 24 27 30 33 36 39 42 45 48 51) | - | - |

MRB 70 EVO R

PG. 28

| DESCRIPTION | N° | CRIMP RANGE |
|---|----|-------------|
| DIE SET N. 6 - LENGTH 56 MM | 6 | 06-08 |
| DIE SET N. 8 - LENGTH 56 MM | 8 | 08-10 |
| DIE SET N. 10 - LENGTH 56 MM | 10 | 10-12 |
| DIE SET N. 12 - LENGTH 56 MM | 12 | 12-14 |
| DIE SET N. 14 - LENGTH 56 MM | 14 | 14-15 |
| DIE SET N. 15 - LENGTH 56 MM | 15 | 15-16 |
| DIE SET N. 16 - LENGTH 56 MM | 16 | 16-18 |
| DIE SET N. 18 - LENGTH 56 MM | 18 | 18-20 |
| DIE SET N. 20 - LENGTH 56 MM | 20 | 20-21 |
| DIE SET N. 21 - LENGTH 56 MM | 21 | 21-22 |
| DIE SET N. 22 - LENGTH 56 MM | 22 | 22-24 |
| DIE SET N. 24 - LENGTH 56 MM | 24 | 24-27 |
| DIE SET N. 27 - LENGTH 56 MM | 27 | 27-30 |
| DIE SET N. 30 - LENGTH 56 MM | 30 | 30-39 |
| KIT 3 DIE SETS HCRIMP110 (16 20 27) | - | - |
| KIT 7 DIE SETS HCRIMP110 (16 18 20 22 24 27 30) | - | - |

MRB 137 EVO R

PG. 29

| DESCRIPTION | N° | CRIMP RANGE |
|---|----|-------------|
| DIE SET N. 4 - LENGTH 56 MM | 4 | 04-05 |
| DIE SET N. 6 - LENGTH 56 MM | 6 | 06-07 |
| DIE SET N. 7 - LENGTH 56 MM | 7 | 07-08 |
| DIE SET N. 8 - LENGTH 56 MM | 8 | 08-10 |
| DIE SET N. 9 - LENGTH 56 MM | 9 | 09-10 |
| DIE SET N. 10 - LENGTH 56 MM | 10 | 10-12 |
| DIE SET N. 12 - LENGTH 56 MM | 12 | 12-15 |
| DIE SET N. 14 - LENGTH 56 MM | 14 | 14-15 |
| DIE SET N. 15 - LENGTH 56 MM | 15 | 15-16 |
| DIE SET N. 16 - LENGTH 56 MM | 16 | 16-17 |
| DIE SET N. 17 - LENGTH 56 MM | 17 | 17-18 |
| DIE SET N. 18 - LENGTH 56 MM | 18 | 18-19 |
| DIE SET N. 19 - LENGTH 56 MM | 19 | 19-20 |
| DIE SET N. 20 - LENGTH 56 MM | 20 | 20-21 |
| DIE SET N. 21 - LENGTH 56 MM | 21 | 21-22 |
| DIE SET N. 22 - LENGTH 56 MM | 22 | 22-23 |
| DIE SET N. 23 - LENGTH 56 MM | 23 | 23-24 |
| DIE SET N. 24 - LENGTH 56 MM | 24 | 24-27 |
| DIE SET N. 27 - LENGTH 56 MM | 27 | 27-30 |
| DIE SET N. 30 - LENGTH 56 MM | 30 | 30-33 |
| DIE SET N. 33 - LENGTH 70 MM | 33 | 33-36 |
| DIE SET N. 36 - LENGTH 75 MM | 36 | 36-39 |
| DIE SET N. 39 - LENGTH 70 MM | 39 | 39-42 |
| DIE SET N. 42 - LENGTH 70 MM | 42 | 42-45 |
| DIE SET N. 45 - LENGTH 70 MM | 45 | 45-48 |
| DIE SET N. 48 - LENGTH 70 MM | 48 | 48-51 |
| DIE SET N. 51 - LENGTH 75 MM | 51 | 51-57 |
| KIT 4 DIE SETS MRB137EVOR (16 20 27 33) | - | - |
| KIT 5 DIE SETS MRB137EVOR ((16 20 27 33 39) | - | - |
| KIT 6 DIE SETS MRB137EVOR (16 18 20 27 33 39) | - | - |
| KIT 6 DIE SETS MRB137EVOR (18 20 24 27 30 39) | - | - |
| KIT 6 DIE SETS MRB137EVOR (16 18 20 22 27 30) | - | - |
| KIT 7 DIE SETS MRB137EVOR (16 18 20 27 33 39 45) | - | - |
| KIT 9 DIE SETS MRB137EVOR (16 18 20 24 27 33 39 45 48) | - | - |
| KIT 9 DIE SETS MRB137EVOR (16 18 20 24 27 30 33 39 48) | - | - |
| KIT 11 DIE SETS MRB137EVOR (16 18 20 22 24 27 30 33 39 45 48) | - | - |
| KIT 12 DIE SETS MRB137EVOR (16 18 20 22 24 27 30 33 36 39 42 45 48) | - | - |
| KIT 15 DIE SETS MRB137EVOR (14 16 18 20 22 24 27 30 33 36 39 42 45 48 51) | - | - |

| DESCRIPTION | N° | CRIMP RANGE |
|---|----|-------------|
| DIE SET N. 4 - LENGTH 56 MM | 4 | 04-05 |
| DIE SET N. 6 - LENGTH 56 MM | 6 | 06-07 |
| DIE SET N. 7 - LENGTH 56 MM | 7 | 07-08 |
| DIE SET N. 9 - LENGTH 56 MM | 9 | 09-10 |
| DIE SET N. 8 - LENGTH 56 MM | 8 | 08-10 |
| DIE SET N. 10 - LENGTH 56 MM | 10 | 10-12 |
| DIE SET N. 12 - LENGTH 56 MM | 12 | 12-15 |
| DIE SET N. 14 - LENGTH 56 MM | 14 | 14-15 |
| DIE SET N. 15 - LENGTH 56 MM | 15 | 15-18 |
| DIE SET N. 16 - LENGTH 56 MM | 16 | 16-18 |
| DIE SET N. 17 - LENGTH 56 MM | 17 | 17-18 |
| DIE SET N. 18 - LENGTH 56 MM | 18 | 18-21 |
| DIE SET N. 19 - LENGTH 56 MM | 19 | 19-20 |
| DIE SET N. 20 - LENGTH 56 MM | 20 | 20-21 |
| DIE SET N. 21 - LENGTH 56 MM | 21 | 21-24 |
| DIE SET N. 22 - LENGTH 56 MM | 22 | 22-24 |
| DIE SET N. 23 - LENGTH 56 MM | 23 | 23-24 |
| DIE SET N. 24 - LENGTH 56 MM | 24 | 24-27 |
| DIE SET N. 27 - LENGTH 56 MM | 27 | 27-30 |
| DIE SET N. 30 - LENGTH 56 MM | 30 | 30-33 |
| DIE SET N. 33 - LENGTH 70 MM | 33 | 33-36 |
| DIE SET N. 36 - LENGTH 75 MM | 36 | 36-39 |
| DIE SET N. 39 - LENGTH 70 MM | 39 | 39-42 |
| DIE SET N. 42 - LENGTH 70 MM | 42 | 42-45 |
| DIE SET N. 45 - LENGTH 70 MM | 45 | 45-48 |
| DIE SET N. 48 - LENGTH 70 MM | 48 | 48-51 |
| DIE SET N. 51 - LENGTH 75 MM | 51 | 51-57 |
| KIT 4 DIE SETS MB137EVO (16 20 27 33) | - | - |
| KIT 5 DIE SETS MB137EVO (16 20 27 33 39) | - | - |
| KIT 6 DIE SETS MB137EVO (16 18 20 27 33 39) | - | - |
| KIT 6 DIE SETS MB137EVO (16 18 20 22 27 30) | - | - |
| KIT 7 DIE SETS MB137EVO (16 18 20 27 33 39 45) | - | - |
| KIT 9 DIE SETS MB137EVO (16 18 20 24 27 33 39 45 48) | - | - |
| KIT 9 DIE SETS MB137EVO (16 18 20 24 27 30 33 39 48) | - | - |
| KIT 11 DIE SETS MB137EVO (16 18 20 22 24 27 30 33 39 45 48) | - | - |
| KIT 15 DIE SETS MB137EVO (14 16 18 20 22 24 27 30 33 36 39 42 45 48 51) | - | - |

MB 240 EVO

PG. 31

| DESCRIPTION | N° | CRIMP RANGE |
|---|----|-------------|
| DIE SET N. 4 - LENGTH 56 MM | 4 | 04-05 |
| DIE SET N. 6 - LENGTH 56 MM | 6 | 06-08 |
| DIE SET N. 7 - LENGTH 56 MM | 7 | 07-08 |
| DIE SET N. 8 - LENGTH 56 MM | 8 | 08-09 |
| DIE SET N. 9 - LENGTH 56 MM | 9 | 09-10 |
| DIE SET N. 10 - LENGTH 56 MM | 10 | 10-12 |
| DIE SET N. 12 - LENGTH 56 MM | 12 | 12-15 |
| DIE SET N. 14 - LENGTH 56 MM | 14 | 14-15 |
| DIE SET N. 15 - LENGTH 56 MM | 15 | 15-18 |
| DIE SET N. 16 - LENGTH 56 MM | 16 | 16-18 |
| DIE SET N. 17 - LENGTH 56 MM | 17 | 17-18 |
| DIE SET N. 18 - LENGTH 56 MM | 18 | 18-21 |
| DIE SET N. 19 - LENGTH 56 MM | 19 | 19-20 |
| DIE SET N. 20 - LENGTH 56 MM | 20 | 20-21 |
| DIE SET N. 21 - LENGTH 56 MM | 21 | 21-24 |
| DIE SET N. 22 - LENGTH 56 MM | 22 | 22-24 |
| DIE SET N. 23 - LENGTH 56 MM | 23 | 23-24 |
| DIE SET N. 24 - LENGTH 70 MM | 24 | 24-27 |
| DIE SET N. 27 - LENGTH 90 MM | 27 | 27-30 |
| DIE SET N. 30 - LENGTH 90 MM | 30 | 30-33 |
| DIE SET N. 33 - LENGTH 90 MM | 33 | 33-36 |
| DIE SET N. 36 - LENGTH 90 MM | 36 | 36-39 |
| DIE SET N. 39 - LENGTH 90 MM | 39 | 39-42 |
| DIE SET N. 42 - LENGTH 90 MM | 42 | 42-45 |
| DIE SET N. 45 - LENGTH 100 MM | 45 | 45-48 |
| DIE SET N. 48 - LENGTH 100 MM | 48 | 48-51 |
| DIE SET N. 51 - LENGTH 100 MM | 51 | 51-57 |
| DIE SET N. 54 - LENGTH 110 MM | 54 | 54-57 |
| DIE SET N. 57 - LENGTH 100 MM | 57 | 57-62 |
| DIE SET N. 60 - LENGTH 100 MM | 60 | 60-62 |
| DIE SET N. 62 - LENGTH 110 MM | 62 | 62-66 |
| DIE SET N. 63 - LENGTH 110 MM | 63 | 63-66 |
| DIE SET N. 66 - LENGTH 100 MM | 66 | 66-70 |
| DIE SET N. 70 - LENGTH 100 MM | 70 | 70-72 |
| DIE SET N. 72 - LENGTH 100 MM | 72 | 72-80 |
| KIT 8 DIE SETS MB240EVO (16 18 20 22 27 30 36 42) | | |
| KIT 9 DIE SETS MB240EVO (16 18 20 22 24 27 33 39 45) | - | - |
| KIT 11 DIE SETS MB240EVO (16 18 20 22 24 27 33 39 45 51 57) | - | - |
| KIT 12 DIE SETS MB240EVO (16 18 20 22 27 30 33 39 48 51 57 66) | - | - |
| KIT 13 DIE SETS MB240EVO (16 18 20 22 24 27 30 33 39 45 51 57 66) | | |
| KIT 16 DIE SETS MB240EVO (16 18 20 22 24 27 30 33 36 39 42 45 48 51 57 66) | | |
| KIT 19 DIE SETS MB240EVO (14 16 18 20 22 24 27 30 33 36 39 42 45 48 51 57 63 66 70) | - | - |

| DESCRIPTION | N° | CRIMP RANGE |
|---|------|-------------|
| DIE SET N. 4 - LENGTH 56 MM | 4 | 04-05 |
| DIE SET N. 6 - LENGTH 56 MM | 6 | 06-08 |
| DIE SET N. 7 - LENGTH 56 MM | 7 | 07-08 |
| DIE SET N. 8 - LENGTH 56 MM | 8 | 08-09 |
| DIE SET N. 9 - LENGTH 56 MM | 9 | 09-10 |
| DIE SET N. 10 - LENGTH 56 MM | 10 | 10-12 |
| DIE SET N. 12 - LENGTH 56 MM | 12 | 12-15 |
| DIE SET N. 14 - LENGTH 56 MM | 14 | 14-15 |
| DIE SET N. 15 - LENGTH 56 MM | 15 | 15-18 |
| DIE SET N. 16 - LENGTH 56 MM | 16 | 16-18 |
| DIE SET N. 17 - LENGTH 56 MM | 17 | 17-18 |
| DIE SET N. 18 - LENGTH 56 MM | 18 | 18-21 |
| DIE SET N. 20 - LENGTH 56 MM | 20 | 20-21 |
| DIE SET N. 21 - LENGTH 56 MM | 21 | 21-24 |
| DIE SET N. 22 - LENGTH 56 MM | 22 | 22-23 |
| DIE SET N. 23 - LENGTH 56 MM | 23 | 23-24 |
| DIE SET N. 24 - LENGTH 70 MM | 24 | 24-27 |
| DIE SET N. 27 - LENGTH 90 MM | 27 | 27-30 |
| DIE SET N. 30 - LENGTH 90 MM | 30 | 30-33 |
| DIE SET N. 33 - LENGTH 90 MM | 33 | 33-36 |
| DIE SET N. 36 - LENGTH 90 MM | 36 | 36-39 |
| DIE SET N. 39 - LENGTH 90 MM | 39 | 39-42 |
| DIE SET N. 42 - LENGTH 90 MM | 42 | 42-45 |
| DIE SET N. 45 - LENGTH 100 MM | 45 | 45-48 |
| DIE SET N. 48 - LENGTH 100 MM | 48 | 48-51 |
| DIE SET N. 51 - LENGTH 110 MM | 51 | 51-57 |
| DIE SET N. 54 - LENGTH 110 MM | 54 | 54-57 |
| DIE SET N. 57 - LENGTH 110 MM | 57 | 57-62 |
| DIE SET N. 60 - LENGTH 110 MM | 60 | 60-62 |
| DIE SET N. 62 - LENGTH 125 MM | 62 | 62-66 |
| DIE SET N. 63 - LENGTH 125 MM | 63 | 63-66 |
| DIE SET N. 66 - LENGTH 110 MM | 66 | 66-70 |
| DIE SET N. 66* - LENGTH 125 MM | 66* | 66-70 |
| DIE SET N. 70 - LENGTH 100 MM | 70 | 70-72 |
| DIE SET N. 70* - LENGTH 125 MM | 70 * | 70-72 |
| DIE SET N. 73 - LENGTH 125 MM | 73 | 73-76 |
| DIE SET N. 75 - LENGTH 125 MM | 75 | 75-76 |
| DIE SET N. 76 - LENGTH 125 MM | 76 | 76-86 |
| DIE SET N. 80 - LENGTH 125 MM | 80 | 80-86 |
| DIE SET N. 86 - LENGTH 125 MM | 86 | 86-90 |
| DIE SET N. 90 - LENGTH 125 MM | 90 | 90-95 |
| DIE SET N. 95 - LENGTH 125 MM | 95 | 95-105 |
| DIE SET N. 99 - LENGTH 125 MM | 99 | 99-109 |
| DIE SET N. 112 - LENGTH 125 MM | 112 | 112-117 |
| DIE SET N. 117 - LENGTH 125 MM | 117 | 117-122 |
| DIE SET N. 122 - LENGTH 125 MM | 122 | 122-127 |
| KIT 13 DIE SETS MB350EVO/L (16 18 20 24 27 30 33 39 48 51 57 66 73) | - | - |
| KIT 21 DIE SETS MB350EVO/L (14 16 18 20 22 24 27 30 33 36 39 42 45 48 51 57 63 66 70 73 76) | - | - |

GOLDENCRIMP 420 EVO

PG. 33

| DESCRIPTION | N° | CRIMP RANGE |
|--|-----|-------------|
| DIE SET N. 4 - LENGTH 56 MM | 4 | 04-05 |
| DIE SET N. 6 - LENGTH 56 MM | 6 | 06-08 |
| DIE SET N. 7 - LENGTH 56 MM | 7 | 07-08 |
| DIE SET N. 8 - LENGTH 56 MM | 8 | 08-09 |
| DIE SET N. 10 - LENGTH 56 MM | 10 | 10-12 |
| DIE SET N. 12 - LENGTH 56 MM | 12 | 12-15 |
| DIE SET N. 14 - LENGTH 56 MM | 14 | 14-15 |
| DIE SET N. 15 - LENGTH 56 MM | 15 | 15-17 |
| DIE SET N. 16 - LENGTH 56 MM | 16 | 16-18 |
| DIE SET N. 17 - LENGTH 56 MM | 17 | 17-18 |
| DIE SET N. 18 - LENGTH 56 MM | 18 | 18-21 |
| DIE SET N. 20 - LENGTH 56 MM | 20 | 20-21 |
| DIE SET N. 21 - LENGTH 56 MM | 21 | 21-24 |
| DIE SET N. 22 - LENGTH 56 MM | 22 | 22-23 |
| DIE SET N. 23 - LENGTH 56 MM | 23 | 23-24 |
| DIE SET N. 24 - LENGTH 70 MM | 24 | 24-27 |
| DIE SET N. 27 - LENGTH 90 MM | 27 | 27-30 |
| DIE SET N. 30 - LENGTH 90 MM | 30 | 30-33 |
| DIE SET N. 33 - LENGTH 90 MM | 33 | 33-36 |
| DIE SET N. 36 - LENGTH 90 MM | 36 | 36-39 |
| DIE SET N. 39 - LENGTH 90 MM | 39 | 39-42 |
| DIE SET N. 42 - LENGTH 90 MM | 42 | 42-45 |
| DIE SET N. 45 - LENGTH 100 MM | 45 | 45-48 |
| DIE SET N. 48 - LENGTH 100 MM | 48 | 48-51 |
| DIE SET N. 51 - LENGTH 110 MM | 51 | 51-57 |
| DIE SET N. 54 - LENGTH 110 MM | 54 | 54-57 |
| DIE SET N. 57 - LENGTH 110 MM | 57 | 57-62 |
| DIE SET N. 60 - LENGTH 110 MM | 60 | 60-62 |
| DIE SET N. 62 - LENGTH 110 MM | 62 | 60-62 |
| DIE SET N. 62* - LENGTH 125 MM | 62* | 62-66 |
| DIE SET N. 63 - LENGTH 56 MM | 63 | 63-66 |
| DIE SET N. 66 - LENGTH 110 MM | 66 | 66-70 |
| DIE SET N. 66* - LENGTH 125 MM | 66* | 66-70 |
| DIE SET N. 70 - LENGTH 100 MM | 70 | 70-72 |
| DIE SET N. 70* - LENGTH 125 MM | 70* | 70-72 |
| DIE SET N. 73 - LENGTH 125 MM | 73 | 73-76 |
| DIE SET N. 75 - LENGTH 125 MM | 75 | 75-76 |
| DIE SET N. 76 - LENGTH 125 MM | 76 | 76-86 |
| DIE SET N. 76* - LENGTH 135 MM | 76* | 76-86 |
| DIE SET N. 80 - LENGTH 125 MM | 80 | 80-82 |
| DIE SET N. 82 - LENGTH 135 MM | 82 | 82-90 |
| DIE SET N. 86 - LENGTH 125 MM | 86 | 86-90 |
| DIE SET N. 90 - LENGTH 125 MM | 90 | 90-95 |
| DIE SET N. 95 - LENGTH 125 MM | 95 | 95-105 |
| DIE SET N. 99 - LENGTH 125 MM | 99 | 99-109 |
| DIE SET N. 112 - LENGTH 125 MM | 112 | 112-117 |
| DIE SET N. 117 - LENGTH 125 MM | 117 | 117-122 |
| DIE SET N. 122 - LENGTH 125 MM | 122 | 122-127 |
| KIT 21 DIE SETS GOLDENCRIMP420EVO (14 16 18 20 22 24 27 30 33 36 39 42 45 48 51 57 63 66 70 73 76) | - | - |

GOLDENCRIMP 450

PG. 34

| DESCRIPTION | N° | CRIMP RANGE |
|--------------------------------|-----|-------------|
| DIE SET N. 4 - LENGTH 56 MM | 4 | 04-05 |
| DIE SET N. 6 - LENGTH 56 MM | 6 | 06-08 |
| DIE SET N. 7 - LENGTH 56 MM | 7 | 07-08 |
| DIE SET N. 8 - LENGTH 56 MM | 8 | 08-09 |
| DIE SET N. 10 - LENGTH 56 MM | 10 | 10-12 |
| DIE SET N. 12 - LENGTH 56 MM | 12 | 12-15 |
| DIE SET N. 14 - LENGTH 56 MM | 14 | 14-15 |
| DIE SET N. 15 - LENGTH 56 MM | 15 | 15-17 |
| DIE SET N. 16 - LENGTH 56 MM | 16 | 16-18 |
| DIE SET N. 17 - LENGTH 56 MM | 17 | 17-18 |
| DIE SET N. 18 - LENGTH 56 MM | 18 | 18-21 |
| DIE SET N. 20 - LENGTH 56 MM | 20 | 20-21 |
| DIE SET N. 21 - LENGTH 56 MM | 21 | 21-24 |
| DIE SET N. 22 - LENGTH 56 MM | 22 | 22-23 |
| DIE SET N. 23 - LENGTH 70 MM | 23 | 23-24 |
| DIE SET N. 24 - LENGTH 70 MM | 24 | 24-27 |
| DIE SET N. 27 - LENGTH 90 MM | 27 | 27-30 |
| DIE SET N. 30 - LENGTH 90 MM | 30 | 30-33 |
| DIE SET N. 33 - LENGTH 90 MM | 33 | 33-36 |
| DIE SET N. 36 - LENGTH 90 MM | 36 | 36-39 |
| DIE SET N. 39 - LENGTH 90 MM | 39 | 39-42 |
| DIE SET N. 42 - LENGTH 90 MM | 42 | 42-45 |
| DIE SET N. 45 - LENGTH 100 MM | 45 | 45-48 |
| DIE SET N. 48 - LENGTH 100 MM | 48 | 48-51 |
| DIE SET N. 51 - LENGTH 110 MM | 51 | 51-57 |
| DIE SET N. 54 - LENGTH 110 MM | 54 | 54-57 |
| DIE SET N. 57 - LENGTH 110 MM | 57 | 57-62 |
| DIE SET N. 60 - LENGTH 110 MM | 60 | 60-62 |
| DIE SET N. 62 - LENGTH 110 MM | 62 | 60-62 |
| DIE SET N. 62* - LENGTH 125 MM | 62* | 62-66 |
| DIE SET N. 63 - LENGTH 125 MM | 63 | 63-66 |
| DIE SET N. 66 - LENGTH 110 MM | 66 | 66-70 |
| DIE SET N. 66* - LENGTH 125 MM | 66* | 66-70 |
| DIE SET N. 70 - LENGTH 100 MM | 70 | 70-72 |
| DIE SET N. 70* - LENGTH 125 MM | 70* | 70-72 |
| DIE SET N. 72 - LENGTH 100 MM | 72 | 72-73 |
| DIE SET N. 73 - LENGTH 125 MM | 73 | 73-76 |
| DIE SET N. 76 - LENGTH 135 MM | 76 | 76-86 |
| DIE SET N. 76* - LENGTH 135 MM | 76* | 76-86 |
| DIE SET N. 80 - LENGTH 125 MM | 80 | 80-82 |
| DIE SET N. 82 - LENGTH 135 MM | 82 | 82-90 |
| DIE SET N. 86 - LENGTH 150 MM | 86 | 86-90 |
| DIE SET N. 90 - LENGTH 125 MM | 90 | 90-95 |
| DIE SET N. 95 - LENGTH 150 MM | 95 | 95-105 |
| DIE SET N. 99 - LENGTH 125 MM | 99 | 99-109 |

GOLDENCRIMP 450 (Continued)

PG. 34

| DESCRIPTION | N° | CRIMP RANGE |
|---|-----|-------------|
| DIE SET N. 105 - LENGTH 150 MM | 105 | 105-112 |
| DIE SET N. 112 - LENGTH 150 MM | 112 | 112-117 |
| DIE SET N. 117 - LENGTH 125 MM | 117 | 117-122 |
| DIE SET N. 122 - LENGTH 125 MM | 122 | 122-127 |
| KIT 14 DIE SETS GOLDENCRIMP450 (16 18 20 22 24 27 30 33 39 45 51 57 66 73) | - | - |
| KIT 21 DIE SETS GOLDENCRIMP450 (14 16 18 20 22 24 27 30 33 36 39 42 45 48 51 57 63 66 70 73 76) | - | - |

MRV 137 EVO R

PG. 35

| DESCRIPTION | N° | CRIMP RANGE |
|---|----|-------------|
| DIE SET N. 4 - LENGTH 56 MM | 4 | 04-05 |
| DIE SET N. 6 - LENGTH 56 MM | 6 | 06-08 |
| DIE SET N. 7 - LENGTH 56 MM | 7 | 07-08 |
| DIE SET N. 8 - LENGTH 56 MM | 8 | 08-10 |
| DIE SET N. 9 - LENGTH 56 MM | 9 | 09-10 |
| DIE SET N. 10 - LENGTH 56 MM | 10 | 10-12 |
| DIE SET N. 12 - LENGTH 56 MM | 12 | 12-15 |
| DIE SET N. 14 - LENGTH 56 MM | 14 | 14-15 |
| DIE SET N. 15 - LENGTH 56 MM | 15 | 15-18 |
| DIE SET N. 16 - LENGTH 56 MM | 16 | 16-18 |
| DIE SET N. 17 - LENGTH 56 MM | 17 | 17-18 |
| DIE SET N. 18 - LENGTH 56 MM | 18 | 18-21 |
| DIE SET N. 19 - LENGTH 56 MM | 19 | 19-20 |
| DIE SET N. 20 - LENGTH 56 MM | 20 | 20-21 |
| DIE SET N. 21 - LENGTH 56 MM | 21 | 21-24 |
| DIE SET N. 22 - LENGTH 56 MM | 22 | 22-23 |
| DIE SET N. 23 - LENGTH 56 MM | 23 | 23-24 |
| DIE SET N. 24 - LENGTH 56 MM | 24 | 24-27 |
| DIE SET N. 27 - LENGTH 56 MM | 27 | 27-30 |
| DIE SET N. 30 - LENGTH 56 MM | 30 | 30-33 |
| DIE SET N. 33 - LENGTH 70 MM | 33 | 33-36 |
| DIE SET N. 36 - LENGTH 75 MM | 36 | 36-39 |
| DIE SET N. 39 - LENGTH 70 MM | 39 | 39-42 |
| DIE SET N. 42 - LENGTH 70 MM | 42 | 42-45 |
| DIE SET N. 45 - LENGTH 70 MM | 45 | 45-48 |
| DIE SET N. 48 - LENGTH 70 MM | 48 | 48-51 |
| DIE SET N. 51 - LENGTH 75 MM | 51 | 51-57 |
| KIT 4 DIE SETS MVB137EVOR (16 20 27 33) | - | - |
| KIT 5 DIE SETS MVB137EVOR (16 20 27 33 39) | - | - |
| KIT 6 DIE SETS MVB137EVOR (16 18 20 27 33 39) | - | - |
| KIT 6 DIE SETS MVB137EVOR (16 18 20 22 27 30) | - | - |
| KIT 7 DIE SETS MVB137EVOR (16 18 20 27 33 39 45) | - | - |
| KIT 9 DIE SETS MVB137EVOR (16 18 20 24 27 33 39 45 48) | - | - |
| KIT 9 DIE SETS MVB137EVOR (16 18 20 24 27 30 33 39 48) | - | - |
| KIT 11 DIE SETS MVB137EVOR (16 18 20 22 24 27 30 33 39 45 48) | - | - |
| KIT 12 DIE SETS MVB137EVOR (16 18 20 22 24 27 30 33 36 39 42 48) | - | - |
| KIT 15 DIE SETS MVB137EVOR (14 16 18 20 22 24 27 30 33 36 39 42 45 48 51) | - | - |

| DESCRIPTION | N° | CRIMP RANGE |
|---|----|-------------|
| DIE SET N. 4 - LENGTH 56 MM | 4 | 04-05 |
| DIE SET N. 6 - LENGTH 56 MM | 6 | 06-08 |
| DIE SET N. 7 - LENGTH 56 MM | 7 | 07-08 |
| DIE SET N. 8 - LENGTH 56 MM | 8 | 08-10 |
| DIE SET N. 9 - LENGTH 56 MM | 9 | 09-10 |
| DIE SET N. 10 - LENGTH 56 MM | 10 | 10-12 |
| DIE SET N. 12 - LENGTH 56 MM | 12 | 12-15 |
| DIE SET N. 14 - LENGTH 56 MM | 14 | 14-15 |
| DIE SET N. 15 - LENGTH 56 MM | 15 | 15-18 |
| DIE SET N. 16 - LENGTH 56 MM | 16 | 16-18 |
| DIE SET N. 17 - LENGTH 56 MM | 17 | 17-18 |
| DIE SET N. 18 - LENGTH 56 MM | 18 | 18-21 |
| DIE SET N. 20 - LENGTH 56 MM | 20 | 20-21 |
| DIE SET N. 21 - LENGTH 56 MM | 21 | 21-24 |
| DIE SET N. 22 - LENGTH 56 MM | 22 | 22-23 |
| DIE SET N. 23 - LENGTH 56 MM | 23 | 23-24 |
| DIE SET N. 24 - LENGTH 56 MM | 24 | 24-27 |
| DIE SET N. 27 - LENGTH 56 MM | 27 | 27-30 |
| DIE SET N. 30 - LENGTH 56 MM | 30 | 30-33 |
| DIE SET N. 33 - LENGTH 70 MM | 33 | 33-36 |
| DIE SET N. 36 - LENGTH 75 MM | 36 | 36-39 |
| DIE SET N. 39 - LENGTH 70 MM | 39 | 39-42 |
| DIE SET N. 42 - LENGTH 70 MM | 42 | 42-45 |
| DIE SET N. 45 - LENGTH 70 MM | 45 | 45-48 |
| DIE SET N. 48 - LENGTH 70 MM | 48 | 48-51 |
| DIE SET N. 51 - LENGTH 75 MM | 51 | 51-57 |
| KIT 4 DIE SETS MV137L (16 20 27 33) | - | - |
| KIT 5 DIE SETS MV137L (16 20 27 33 39) | - | - |
| KIT 6 DIE SETS MV137L (16 18 20 27 33 39) | - | - |
| KIT 6 DIE SETS MV137L (16 18 20 22 27 30) | - | - |
| KIT 7 DIE SETS MV137L (16 18 20 27 33 39 45) | - | - |
| KIT 9 DIE SETS MV137L (16 18 20 24 27 33 39 45 48) | - | - |
| KIT 9 DIE SETS MV137L (16 18 20 24 27 30 33 39 48) | - | - |
| KIT 11 DIE SETS MV137L (16 18 20 22 24 27 30 33 39 45 48) | - | - |
| KIT 15 DIE SETS MV137L (14 16 18 20 22 24 27 30 33 36 39 42 45 48 51) | - | - |

| DESCRIPTION | N° | CRIMP RANGE |
|--|----|-------------|
| DIE SET N. 4 - LENGTH 56 MM | 4 | 04-05 |
| DIE SET N. 6 - LENGTH 56 MM | 6 | 06-08 |
| DIE SET N. 7 - LENGTH 56 MM | 7 | 07-08 |
| DIE SET N. 8 - LENGTH 56 MM | 8 | 08-09 |
| DIE SET N. 9 - LENGTH 56 MM | 9 | 09-10 |
| DIE SET N. 10 - LENGTH 56 MM | 10 | 10-12 |
| DIE SET N. 12 - LENGTH 56 MM | 12 | 12-15 |
| DIE SET N. 14 - LENGTH 56 MM | 14 | 14-15 |
| DIE SET N. 15 - LENGTH 56 MM | 15 | 15-18 |
| DIE SET N. 16 - LENGTH 56 MM | 16 | 16-18 |
| DIE SET N. 17 - LENGTH 56 MM | 17 | 17-18 |
| DIE SET N. 18 - LENGTH 56 MM | 18 | 18-21 |
| DIE SET N. 20 - LENGTH 56 MM | 20 | 17-18 |
| DIE SET N. 21 - LENGTH 56 MM | 21 | 21-24 |
| DIE SET N. 22 - LENGTH 56 MM | 22 | 22-23 |
| DIE SET N. 23 - LENGTH 56 MM | 23 | 23-24 |
| DIE SET N. 24 - LENGTH 70 MM | 24 | 24-27 |
| DIE SET N. 27 - LENGTH 90 MM | 27 | 27-30 |
| DIE SET N. 30 - LENGTH 90 MM | 30 | 30-33 |
| DIE SET N. 33 - LENGTH 90 MM | 33 | 33-36 |
| DIE SET N. 36 - LENGTH 90 MM | 36 | 36-39 |
| DIE SET N. 39 - LENGTH 90 MM | 39 | 39-42 |
| DIE SET N. 42 - LENGTH 90 MM | 42 | 42-45 |
| DIE SET N. 45 - LENGTH 100 MM | 45 | 45-48 |
| DIE SET N. 48 - LENGTH 100 MM | 48 | 48-51 |
| DIE SET N. 51 - LENGTH 100 MM | 51 | 51-57 |
| DIE SET N. 54 - LENGTH 100 MM | 54 | 54-57 |
| DIE SET N. 57 - LENGTH 100 MM | 57 | 57-62 |
| DIE SET N. 60 - LENGTH 100 MM | 60 | 60-62 |
| DIE SET N. 62 - LENGTH 110 MM | 62 | 62-66 |
| DIE SET N. 63 - LENGTH 105 MM | 23 | 63-66 |
| DIE SET N. 66 - LENGTH 100 MM | 66 | 66-70 |
| DIE SET N. 70 - LENGTH 100 MM | 70 | 70-72 |
| DIE SET N. 72 - LENGTH 100 MM | 72 | 72-80 |
| KIT 9 DIE SETS MV240 (16 18 20 22 24 27 33 39 45) | - | - |
| KIT 11 DIE SETS MV240 (16 18 20 22 24 27 33 39 45 51 57) | - | - |
| KIT 12 DIE SETS MV240 (18 20 22 27 30 33 39 48 51 57 66 70) | - | - |
| KIT 13 DIE SETS MV240 (16 18 20 22 24 27 30 33 39 45 51 57 66) | - | - |
| KIT 19 DIE SETS MV240 (14 16 18 20 22 24 27 30 33 36 39 42 45 48 51 57 63 66 70) | - | - |

| DESCRIPTION | N° | CRIMP RANGE |
|--------------------------------|-----|-------------|
| DIE SET N. 4 - LENGTH 56 MM | 4 | 04-05 |
| DIE SET N. 6 - LENGTH 56 MM | 6 | 06-08 |
| DIE SET N. 7 - LENGTH 56 MM | 7 | 07-08 |
| DIE SET N. 8 - LENGTH 56 MM | 8 | 08-09 |
| DIE SET N. 9 - LENGTH 56 MM | 9 | 09-10 |
| DIE SET N. 10 - LENGTH 56 MM | 10 | 10-12 |
| DIE SET N. 12 - LENGTH 56 MM | 12 | 12-15 |
| DIE SET N. 14 - LENGTH 56 MM | 14 | 14-15 |
| DIE SET N. 15 - LENGTH 56 MM | 15 | 15-18 |
| DIE SET N. 16 - LENGTH 56 MM | 16 | 16-18 |
| DIE SET N. 17 - LENGTH 56 MM | 17 | 17-18 |
| DIE SET N. 18 - LENGTH 56 MM | 18 | 18-21 |
| DIE SET N. 20 - LENGTH 56 MM | 20 | 17-18 |
| DIE SET N. 21 - LENGTH 56 MM | 21 | 21-24 |
| DIE SET N. 22 - LENGTH 56 MM | 22 | 22-23 |
| DIE SET N. 23 - LENGTH 56 MM | 23 | 23-24 |
| DIE SET N. 24 - LENGTH 70 MM | 24 | 24-27 |
| DIE SET N. 27 - LENGTH 90 MM | 27 | 27-30 |
| DIE SET N. 30 - LENGTH 90 MM | 30 | 30-33 |
| DIE SET N. 33 - LENGTH 90 MM | 33 | 33-36 |
| DIE SET N. 36 - LENGTH 90 MM | 36 | 36-39 |
| DIE SET N. 39 - LENGTH 90 MM | 39 | 39-42 |
| DIE SET N. 42 - LENGTH 90 MM | 42 | 42-45 |
| DIE SET N. 45 - LENGTH 100 MM | 45 | 45-48 |
| DIE SET N. 48 - LENGTH 100 MM | 48 | 48-51 |
| DIE SET N. 51 - LENGTH 100 MM | 51 | 51-57 |
| DIE SET N. 54 - LENGTH 100 MM | 54 | 54-57 |
| DIE SET N. 57 - LENGTH 100 MM | 57 | 57-62 |
| DIE SET N. 60 - LENGTH 100 MM | 60 | 60-62 |
| DIE SET N. 62 - LENGTH 110 MM | 62 | 62-66 |
| DIE SET N. 63 - LENGTH 105 MM | 63 | 63-66 |
| DIE SET N. 66 - LENGTH 110 MM* | 66 | 66-70 |
| DIE SET N. 66 - LENGTH 125 MM | 66 | 66-70 |
| DIE SET N. 70 - LENGTH 100 MM | 70 | 70-72 |
| DIE SET N. 70 - LENGTH 125 MM* | 70 | 70-72 |
| DIE SET N. 73 - LENGTH 125 MM | 73 | 73-76 |
| DIE SET N. 75 - LENGTH 125 MM | 75 | 75-76 |
| DIE SET N. 76 - LENGTH 125 MM | 76 | 76-86 |
| DIE SET N. 80 - LENGTH 125 MM | 80 | 80-86 |
| DIE SET N. 86 - LENGTH 125 MM | 86 | 86-90 |
| DIE SET N. 90 - LENGTH 125 MM | 90 | 90-95 |
| DIE SET N. 95 - LENGTH 125 MM | 95 | 95-105 |
| DIE SET N. 99 - LENGTH 125 MM | 99 | 99-109 |
| DIE SET N. 112 - LENGTH 125 MM | 112 | 112-117 |
| DIE SET N. 117 - LENGTH 125 MM | 117 | 117-122 |
| DIE SET N. 122 - LENGTH 125 MM | 122 | 122-127 |

MV 350 / 350 L (Continued)

PG. 38

| DESCRIPTION | N° | CRIMP RANGE |
|--|----|-------------|
| KIT 10 DIE SETS MV350 (16 18 20 22 27 30 36 42 48 51) | - | - |
| KIT 12 DIE SETS MV350 (16 18 20 22 24 27 33 39 45 51 57 66) | - | - |
| KIT 13 DIE SETS MV350 (16 18 20 24 27 30 33 39 48 51 57 66 73) | - | - |
| KIT 14 DIE SETS MV350 (16 18 20 22 24 27 30 33 39 45 51 57 66 73) | - | - |
| KIT 21 DIE SETS MV350 (14 16 18 20 22 24 27 30 33 36 39 42 45 48 51 57 63 66 70 73 76) | - | - |

N CRIMP 70/80

| DESCRIPTION |
|---|
| SET OF NUT CRIMPING DIES N.12 PEP 158 (N CRIMP) |
| SET OF NUT CRIMPING DIES N.14 PEP 158 (N CRIMP) |
| SET OF NUT CRIMPING DIES N.16 PEP 158 (N CRIMP) |
| SET OF NUT CRIMPING DIES N.16,5 PEP 158 (N CRIMP) |
| SET OF NUT CRIMPING DIES N.19 PEP 158 (N CRIMP) |
| SET OF NUT CRIMPING DIES N.22 PEP 158 (N CRIMP) |
| SET OF NUT CRIMPING DIES N.26 PEP 158 (N CRIMP) |
| SET OF NUT CRIMPING DIES N.30 PEP 158 (N CRIMP) |
| SET OF NUT CRIMPING DIES N.34 PEP 158 (N CRIMP) |
| SET OF NUT CRIMPING DIES N.39 PEP 158 (N CRIMP) |
| SET OF NUT CRIMPING DIES N.41 PEP 158 (N CRIMP) |
| SET OF NUT CRIMPING DIES N.45 PEP 158 (N CRIMP) |
| SET OF NUT CRIMPING DIES N.51 PEP 158 (N CRIMP) |
| SET OF NUT CRIMPING DIES N.57 PEP 158 (N CRIMP) |
| SET OF NUT CRIMPING DIES N.63 PEP 158 (N CRIMP) |
| SET OF NUT CRIMPING DIES N.69 PEP 158 (N CRIMP) |
| SET OF NUT CRIMPING DIES N.73 PEP 158 (N CRIMP) |

| DESCRIPTION | N° | CRIMP RANGE |
|---|----|-------------|
| DIE SET N. 4 - LENGTH 56 MM | 4 | 04-05 |
| DIE SET N. 6 - LENGTH 56 MM | 6 | 06-08 |
| DIE SET N. 7 - LENGTH 56 MM | 7 | 07-08 |
| DIE SET N. 8 - LENGTH 56 MM | 8 | 08-09 |
| DIE SET N. 9 - LENGTH 56 MM | 9 | 09-10 |
| DIE SET N. 10 - LENGTH 56 MM | 10 | 10-12 |
| DIE SET N. 12 - LENGTH 70 MM | 12 | 12-15 |
| DIE SET N. 14 - LENGTH 70 MM | 14 | 14-15 |
| DIE SET N. 15 - LENGTH 70 MM | 15 | 15-18 |
| DIE SET N. 16 - LENGTH 70 MM | 16 | 16-18 |
| DIE SET N. 17 - LENGTH 70 MM | 17 | 17-18 |
| DIE SET N. 18 - LENGTH 70 MM | 18 | 18-21 |
| DIE SET N. 20 - LENGTH 70 MM | 20 | 20-21 |
| DIE SET N. 21 - LENGTH 70 MM | 21 | 21-24 |
| DIE SET N. 22 - LENGTH 70 MM | 22 | 22-24 |
| DIE SET N. 24 - LENGTH 70 MM | 24 | 24-27 |
| DIE SET N. 27 - LENGTH 70 MM | 27 | 27-30 |
| DIE SET N. 30 - LENGTH 70 MM | 30 | 30-33 |
| DIE SET N. 33 - LENGTH 70 MM | 33 | 33-36 |
| DIE SET N. 36 - LENGTH 75 MM | 36 | 36-39 |
| DIE SET N. 39 - LENGTH 70 MM | 39 | 39-42 |
| DIE SET N. 42 - LENGTH 70 MM | 42 | 42-45 |
| DIE SET N. 45 - LENGTH 70 MM | 45 | 45-48 |
| DIE SET N. 48 - LENGTH 70 MM | 48 | 48-51 |
| DIE SET N. 51 - LENGTH 75 MM | 51 | 51-57 |
| KIT 9 DIE SETS MS200 (16 18 20 22 24 27 33 39 45) | - | - |
| KIT 11 DIE SETS MS200 (16 18 20 22 24 27 30 33 39 45 48) | - | - |
| KIT 14 DIE SETS MS200 (14 16 18 20 22 24 27 30 33 36 39 42 45 48) | - | - |

| DESCRIPTION | N° | CRIMP RANGE |
|--|-----|-------------|
| DIE SET N. 4 - LENGTH 56 MM | 4 | 04-05 |
| DIE SET N. 6 - LENGTH 56 MM | 6 | 06-08 |
| DIE SET N. 7 - LENGTH 56 MM | 7 | 07-08 |
| DIE SET N. 8 - LENGTH 56 MM | 8 | 08-09 |
| DIE SET N. 10 - LENGTH 90 MM | 10 | 10-12 |
| DIE SET N. 12 - LENGTH 90 MM | 12 | 12-15 |
| DIE SET N. 14 - LENGTH 90 MM | 14 | 14-15 |
| DIE SET N. 15 - LENGTH 70 MM | 15 | 15-18 |
| DIE SET N. 16 - LENGTH 90 MM | 16 | 16-18 |
| DIE SET N. 17 - LENGTH 90 MM | 17 | 17-18 |
| DIE SET N. 18 - LENGTH 70 MM | 18 | 18-21 |
| DIE SET N. 20 - LENGTH 90 MM | 20 | 20-21 |
| DIE SET N. 21 - LENGTH 90 MM | 21 | 21-24 |
| DIE SET N. 22 - LENGTH 90 MM | 22 | 22-27 |
| DIE SET N. 24 - LENGTH 90 MM | 24 | 24-27 |
| DIE SET N. 27 - LENGTH 90 MM | 27 | 27-30 |
| DIE SET N. 30 - LENGTH 90 MM | 30 | 30-33 |
| DIE SET N. 33 - LENGTH 90 MM | 33 | 33-36 |
| DIE SET N. 36 - LENGTH 90 MM | 36 | 36-39 |
| DIE SET N. 39 - LENGTH 90 MM | 39 | 39-42 |
| DIE SET N. 42 - LENGTH 90 MM | 42 | 42-45 |
| DIE SET N. 45 - LENGTH 95 MM* | 45 | 45-48 |
| DIE SET N. 45 - LENGTH 100 MM | 45 | 45-48 |
| DIE SET N. 48 - LENGTH 100 MM | 48 | 48-51 |
| DIE SET N. 51 - LENGTH 100 MM | 51 | 51-57 |
| DIE SET N. 51 - LENGTH 110 MM* | 51 | 51-57 |
| DIE SET N. 54 - LENGTH 100 MM | 54 | 54-57 |
| DIE SET N. 57 - LENGTH 100 MM | 57 | 57-62 |
| DIE SET N. 57 - LENGTH 110 MM* | 57 | 57-62 |
| DIE SET N. 60 - LENGTH 100 MM | 60 | 60-62 |
| DIE SET N. 62 - LENGTH 110 MM | 62 | 62-66 |
| DIE SET N. 63 - LENGTH 125 MM | 63 | 62-66 |
| DIE SET N. 66 - LENGTH 100 MM | 66 | 66-70 |
| DIE SET N. 66 - LENGTH 125 MM* | 66 | 66-70 |
| DIE SET N. 70 - LENGTH 100 MM | 70 | 70-72 |
| DIE SET N. 70 - LENGTH 125 MM | 70 | 70-72 |
| DIE SET N. 73 - LENGTH 120 MM | 73 | 73-76 |
| DIE SET N. 76 - LENGTH 120 MM | 76 | 76-86 |
| DIE SET N. 80 - LENGTH 100 MM | 80 | 80-86 |
| DIE SET N. 86 - LENGTH 100-65 MM | 86 | 86-90 |
| DIE SET N. 90 - LENGTH 100 MM, REINFORCED PIN | 90 | 90-95 |
| DIE SET N. 95 - LENGTH 100 MM, REINFORCED PIN | 95 | 95-105 |
| DIE SET N. 99 - LENGTH 100 MM | 99 | 99-109 |
| DIE SET N. 112 - LENGTH 100 MM | 112 | 112-117 |
| DIE SET N. 117 - LENGTH 100 MM | 117 | 117-122 |
| DIE SET N. 122 - LENGTH 100 MM | 122 | 122-127 |
| KIT 21 DIE SETS MS320 (14 16 18 20 22 24 27 30 33 36 39 42 45 48 51 57 63 66 70 73 76) | - | - |
| KIT 21 DIE SETS MS320 (7 10 12 14 16 18 20 22 24 27 30 33 39 45 51 57 66 73 76 80 95) | - | - |

| DESCRIPTION | N° | CRIMP RANGE |
|--|-----|-------------|
| DIE SET N. 4 - LENGTH 56 MM | 4 | 04-05 |
| DIE SET N. 6 - LENGTH 56 MM | 6 | 06-08 |
| DIE SET N. 7 - LENGTH 56 MM | 7 | 07-08 |
| DIE SET N. 8 - LENGTH 56 MM | 8 | 08-09 |
| DIE SET N. 10 - LENGTH 90 MM | 10 | 10-12 |
| DIE SET N. 12 - LENGTH 90 MM | 12 | 12-15 |
| DIE SET N. 14 - LENGTH 90 MM | 14 | 14-15 |
| DIE SET N. 15 - LENGTH 90 MM | 15 | 15-18 |
| DIE SET N. 16 - LENGTH 90 MM | 16 | 16-18 |
| DIE SET N. 17 - LENGTH 90 MM | 17 | 17-18 |
| DIE SET N. 18 - LENGTH 90 MM | 18 | 18-21 |
| DIE SET N. 20 - LENGTH 90 MM | 20 | 20-21 |
| DIE SET N. 21 - LENGTH 90 MM | 21 | 21-24 |
| DIE SET N. 22 - LENGTH 90 MM | 22 | 22-24 |
| DIE SET N. 24 - LENGTH 90 MM | 24 | 24-27 |
| DIE SET N. 27 - LENGTH 90 MM | 27 | 27-30 |
| DIE SET N. 30 - LENGTH 90 MM* | 30 | 30-33 |
| DIE SET N. 30 - LENGTH 100 MM | 30 | 30-33 |
| DIE SET N. 33 - LENGTH 90 MM | 33 | 33-36 |
| DIE SET N. 36 - LENGTH 90 MM | 36 | 36-39 |
| DIE SET N. 39 - LENGTH 90 MM | 39 | 39-42 |
| DIE SET N. 42 - LENGTH 90 MM | 42 | 42-45 |
| DIE SET N. 45 - LENGTH 100 MM | 45 | 45-48 |
| DIE SET N. 48 - LENGTH 100 MM | 48 | 48-51 |
| DIE SET N. 51 - LENGTH 110 MM | 51 | 51-57 |
| DIE SET N. 54 - LENGTH 110 MM | 54 | 54-57 |
| DIE SET N. 57 - LENGTH 110 MM | 57 | 57-62 |
| DIE SET N. 60 - LENGTH 110 MM | 60 | 60-62 |
| DIE SET N. 62 - LENGTH 110 MM | 62 | 62-66 |
| DIE SET N. 62* - LENGTH 125 MM | 62* | 62-66 |
| DIE SET N. 63 - LENGTH 125 MM | 63 | 63-66 |
| DIE SET N. 66 - LENGTH 110 MM | 66 | 66-70 |
| DIE SET N. 66* - LENGTH 125 MM | 66* | 66-70 |
| DIE SET N. 70 - LENGTH 110 MM | 70 | 70-72 |
| DIE SET N. 70* - LENGTH 125 MM | 70* | 70-72 |
| DIE SET N. 73 - LENGTH 125-28 MM, REINFORCED PIN | 73 | 73-76 |
| DIE SET N. 76 - LENGTH 135 MM | 76 | 76-86 |
| DIE SET N. 80 - LENGTH 125 MM | 80 | 80-86 |
| DIE SET N. 82 - LENGTH 135 MM | 82 | 82-90 |
| DIE SET N. 86 - LENGTH 125 MM | 86 | 86-90 |
| DIE SET N. 90 - LENGTH 125 MM | 90 | 90-95 |
| DIE SET N. 95 - LENGTH 125 MM | 95 | 95-105 |
| DIE SET N. 99 - LENGTH 125 MM, REINFORCED PIN | 99 | 99-105 |
| DIE SET N. 105 - LENGTH 150 MM | 105 | 105-112 |
| DIE SET N. 112 - LENGTH 150 MM | 112 | 112-122 |
| DIE SET N. 117 - LENGTH 125 MM | 117 | 117-122 |
| DIE SET N. 122 - LENGTH 130 MM, REINFORCED PIN | 122 | 122-130 |
| KIT 14 DIE SETS MS480 (16 18 20 22 24 27 30 33 39 45 51 57 66 73) | - | - |
| KIT 21 DIE SETS MS480 (14 16 18 20 22 24 27 30 33 36 39 42 45 48 51 57 63 66 70 73 76) | - | - |

| DESCRIPTION | N° | CRIMP RANGE |
|--|-----|-------------|
| DIE SET N. 4 - LENGTH 56 MM | 4 | 04-05 |
| DIE SET N. 6 - LENGTH 56 MM | 6 | 06-08 |
| DIE SET N. 7 - LENGTH 56 MM | 7 | 07-08 |
| DIE SET N. 8 - LENGTH 56 MM | 8 | 08-09 |
| DIE SET N. 10 - LENGTH 56 MM | 10 | 10-12 |
| DIE SET N. 12 - LENGTH 90 MM | 12 | 12-15 |
| DIE SET N. 15 - LENGTH 90 MM | 15 | 15-18 |
| DIE SET N. 16 - LENGTH 90 MM | 16 | 16-18 |
| DIE SET N. 17 - LENGTH 90 MM | 17 | 17-18 |
| DIE SET N. 18 - LENGTH 90 MM | 18 | 18-21 |
| DIE SET N. 20 - LENGTH 90 MM | 20 | 20-21 |
| DIE SET N. 21 - LENGTH 90 MM | 21 | 21-24 |
| DIE SET N. 22 - LENGTH 90 MM | 22 | 22-24 |
| DIE SET N. 24 - LENGTH 90 MM | 24 | 24-27 |
| DIE SET N. 27 - LENGTH 90 MM | 27 | 27-30 |
| DIE SET N. 30 - LENGTH 90 MM | 30 | 30-33 |
| DIE SET N. 33 - LENGTH 90 MM | 33 | 33-36 |
| DIE SET N. 36 - LENGTH 90 MM | 36 | 36-39 |
| DIE SET N. 39 - LENGTH 90 MM | 39 | 39-42 |
| DIE SET N. 42 - LENGTH 90 MM | 42 | 42-45 |
| DIE SET N. 45 - LENGTH 100 MM | 45 | 45-48 |
| DIE SET N. 48 - LENGTH 100 MM | 48 | 48-51 |
| DIE SET N. 51 - LENGTH 110 MM | 51 | 51-57 |
| DIE SET N. 54 - LENGTH 110 MM | 54 | 54-57 |
| DIE SET N. 57 - LENGTH 110 MM | 57 | 57-62 |
| DIE SET N. 60 - LENGTH 110 MM | 60 | 60-62 |
| DIE SET N. 62 - LENGTH 110 MM | 62 | 62-66 |
| DIE SET N. 62* - LENGTH 125 MM | 62* | 62-66 |
| DIE SET N. 63 - LENGTH 125 MM | 63 | 63-66 |
| DIE SET N. 66 - LENGTH 110 MM | 66 | 66-70 |
| DIE SET N. 66* - LENGTH 125 MM | 66* | 66-70 |
| DIE SET N. 70 - LENGTH 110 MM | 70 | 70-72 |
| DIE SET N. 70* - LENGTH 125 MM | 70* | 70-72 |
| DIE SET N. 73 - LENGTH 125-28 MM, REINFORCED PIN | 73 | 73-76 |
| DIE SET N. 76 - LENGTH 125 MM | 76 | 76-86 |
| DIE SET N. 76* - LENGTH 135 MM | 76* | 76-86 |
| DIE SET N. 80 - LENGTH 125 MM | 80 | 80-86 |
| DIE SET N. 82 - LENGTH 135 MM | 82 | 82-90 |
| DIE SET N. 86 - LENGTH 150 MM | 86 | 86-90 |
| DIE SET N. 90 - LENGTH 125 MM | 90 | 90-95 |
| DIE SET N. 95 - LENGTH 150 MM | 95 | 95-105 |
| DIE SET N. 105 - LENGTH 180 MM | 105 | 105-112 |
| DIE SET N. 112 - LENGTH 150 MM | 112 | 112-122 |
| DIE SET N. 117 - LENGTH 125 MM | 117 | 117-122 |
| DIE SET N. 122 - LENGTH 130 MM | 122 | 122-130 |
| DIE SET N. 130 - LENGTH 180 MM | 130 | 130-140 |
| KIT 18 DIE SETS MS800 (39 42 45 48 51 57 63 66 70 73 76 82 86 90 95 105 112 130) | - | - |

MS 320 OPEN HEAD

PG. 44

| DESCRIPTION | N° | CRIMP RANGE |
|--------------------------------|-----|-------------|
| DIE SET N. 73 - LENGTH 125 MM | 73 | 73-80 |
| DIE SET N. 80 - LENGTH 125 MM | 80 | 80-86 |
| DIE SET N. 84 - LENGTH 125 MM | 84 | 86-90 |
| DIE SET N. 86 - LENGTH 125 MM | 86 | 86-90 |
| DIE SET N. 90 - LENGTH 125 MM | 90 | 90-95 |
| DIE SET N. 95 - LENGTH 125 MM | 95 | 95-105 |
| DIE SET N. 99 - LENGTH 125 MM | 99 | 99-106 |
| DIE SET N. 106 - LENGTH 125 MM | 106 | 106-112 |
| DIE SET N. 112 - LENGTH 125 MM | 112 | 112-117 |
| DIE SET N. 117 - LENGTH 125 MM | 117 | 117-122 |
| DIE SET N. 122 - LENGTH 125 MM | 122 | 122-125 |
| DIE SET N. 125 - LENGTH 125 MM | 125 | 125-128 |
| DIE SET N. 128 - LENGTH 125 MM | 128 | 128-130 |
| DIE SET N. 130 - LENGTH 125 MM | 130 | 130-140 |
| DIE SET N. 135 - LENGTH 125 MM | 135 | 135-145 |
| DIE SET N. 150 - LENGTH 125 MM | 150 | 150-160 |
| DIE SET N. 156 - LENGTH 125 MM | 156 | 156-166 |
| DIE SET N. 158 - LENGTH 125 MM | 158 | 158-168 |
| DIE SET N. 165 - LENGTH 125 MM | 165 | 165-185 |
| DIE SET N. 175 - LENGTH 125 MM | 175 | 175-195 |
| DIE SET N. 181 - LENGTH 125 MM | 181 | 181-201 |
| DIE SET N. 185 - LENGTH 125 MM | 185 | 185-205 |
| DIE SET N. 188 - LENGTH 125 MM | 188 | 188-208 |
| DIE SET N. 190 - LENGTH 125 MM | 190 | 190-210 |

| DESCRIPTION | N° | CRIMP RANGE |
|--------------------------------|-----|-------------|
| DIE SET N. 4 - LENGTH 56 MM | 4 | 04-05 |
| DIE SET N. 6 - LENGTH 56 MM | 6 | 06-08 |
| DIE SET N. 7 - LENGTH 56 MM | 7 | 07-08 |
| DIE SET N. 8 - LENGTH 56 MM | 8 | 08-09 |
| DIE SET N. 10 - LENGTH 56 MM | 10 | 10-12 |
| DIE SET N. 12 - LENGTH 56 MM | 12 | 12-15 |
| DIE SET N. 15 - LENGTH 56 MM | 15 | 15-18 |
| DIE SET N. 17 - LENGTH 56 MM | 17 | 17-18 |
| DIE SET N. 18 - LENGTH 56MM | 18 | 18-21 |
| DIE SET N. 20 - LENGTH 56 MM | 20 | 20-21 |
| DIE SET N. 21 - LENGTH 56 MM | 21 | 21-24 |
| DIE SET N. 24 - LENGTH 70 MM | 24 | 24-27 |
| DIE SET N. 27 - LENGTH 90 MM | 27 | 27-30 |
| DIE SET N. 30 - LENGTH 90 MM | 30 | 30-33 |
| DIE SET N. 33 - LENGTH 90 MM | 33 | 33-36 |
| DIE SET N. 36 - LENGTH 90 MM | 36 | 36-39 |
| DIE SET N. 39 - LENGTH 90 MM | 39 | 39-42 |
| DIE SET N. 42 - LENGTH 90 MM | 42 | 42-45 |
| DIE SET N. 45 - LENGTH 100 MM | 45 | 45-48 |
| DIE SET N. 48 - LENGTH 100 MM | 48 | 48-51 |
| DIE SET N. 51 - LENGTH 110 MM | 51 | 51-57 |
| DIE SET N. 54 - LENGTH 110 MM | 54 | 36-39 |
| DIE SET N. 57 - LENGTH 110 MM | 57 | 57-62 |
| DIE SET N. 60 - LENGTH 110 MM | 60 | 60-62 |
| DIE SET N. 66 - LENGTH 125 MM | 66 | 66-70 |
| DIE SET N. 73 - LENGTH 125 MM | 73 | 73-80 |
| DIE SET N. 80 - LENGTH 125 MM | 80 | 80-86 |
| DIE SET N. 86 - LENGTH 125 MM | 86 | 86-90 |
| DIE SET N. 90 - LENGTH 125 MM | 90 | 90-95 |
| DIE SET N. 95 - LENGTH 125 MM | 95 | 95-105 |
| DIE SET N. 99 - LENGTH 125 MM | 99 | 99-112 |
| DIE SET N. 112 - LENGTH 125 MM | 112 | 112-117 |
| DIE SET N. 117 - LENGTH 125 MM | 117 | 117-122 |
| DIE SET N. 122 - LENGTH 125 MM | 122 | 122-130 |
| DIE SET N. 130 - LENGTH 150 MM | 130 | 130-140 |
| DIE SET N. 136 - LENGTH 150 MM | 136 | 136-146 |
| DIE SET N. 146 - LENGTH 150 MM | 146 | 146-156 |
| DIE SET N. 156 - LENGTH 150 MM | 156 | 156-166 |
| DIE SET N. 166 - LENGTH 150 MM | 166 | 166-176 |
| DIE SET N. 176 - LENGTH 150 MM | 176 | 176-186 |
| DIE SET N. 186 - LENGTH 150 MM | 186 | 186-196 |
| DIE SET N. 196 - LENGTH 150 MM | 196 | 196-206 |

| DESCRIPTION | N° | CRIMP RANGE |
|--|-----|-------------|
| DIE SET N. 4 - LENGTH 56 MM | 4 | 04-05 |
| DIE SET N. 6 - LENGTH 56 MM | 6 | 06-08 |
| DIE SET N. 7 - LENGTH 56 MM | 7 | 07-08 |
| DIE SET N. 8 - LENGTH 56 MM | 8 | 08-09 |
| DIE SET N. 10 - LENGTH 56 MM | 10 | 10-12 |
| DIE SET N. 12 - LENGTH 56 MM | 12 | 12-15 |
| DIE SET N. 14 - LENGTH 56 MM | 14 | 14-15 |
| DIE SET N. 15 - LENGTH 56 MM | 15 | 15-18 |
| DIE SET N. 16 - LENGTH 56 MM | 16 | 16-18 |
| DIE SET N. 17 - LENGTH 56 MM | 17 | 17-18 |
| DIE SET N. 18 - LENGTH 56 MM | 18 | 18-21 |
| DIE SET N. 20 - LENGTH 56 MM | 20 | 20-21 |
| DIE SET N. 21 - LENGTH 56 MM | 21 | 21-24 |
| DIE SET N. 22 - LENGTH 56 MM | 22 | 22-24 |
| DIE SET N. 24 - LENGTH 70 MM | 24 | 24-27 |
| DIE SET N. 27 - LENGTH 90 MM | 27 | 27-30 |
| DIE SET N. 30 - LENGTH 90 MM | 30 | 30-33 |
| DIE SET N. 33 - LENGTH 90 MM | 33 | 33-36 |
| DIE SET N. 36 - LENGTH 90 MM | 36 | 36-39 |
| DIE SET N. 39 - LENGTH 90 MM | 39 | 39-42 |
| DIE SET N. 42 - LENGTH 90 MM | 42 | 42-45 |
| DIE SET N. 45 - LENGTH 100 MM | 45 | 45-48 |
| DIE SET N. 48 - LENGTH 100 MM | 48 | 48-51 |
| DIE SET N. 51 - LENGTH 110 MM | 51 | 51-57 |
| DIE SET N. 54 - LENGTH 110 MM | 54 | 54-57 |
| DIE SET N. 57 - LENGTH 110 MM | 57 | 57-62 |
| DIE SET N. 60 - LENGTH 110 MM | 60 | 60-62 |
| DIE SET N. 62 - LENGTH 110 MM | 62 | 62-66 |
| DIE SET N. 62* - LENGTH 125 MM | 62* | 62-66 |
| DIE SET N. 63 - LENGTH 125 MM | 63 | 63-66 |
| DIE SET N. 66 - LENGTH 110 MM | 66 | 66-70 |
| DIE SET N. 66* - LENGTH 125 MM | 66* | 66-70 |
| DIE SET N. 70 - LENGTH 100 MM | 70 | 70-72 |
| DIE SET N. 70* - LENGTH 125 MM | 70* | 70-72 |
| DIE SET N. 72 - LENGTH 125 MM | 72 | 72-73 |
| DIE SET N. 73 - LENGTH 125-28 MM, REINFORCED PIN | 73 | 73-76 |
| DIE SET N. 76 - LENGTH 125 MM | 76 | 76-86 |
| DIE SET N. 76* - LENGTH 135 MM | 76* | 76-86 |
| DIE SET N. 80 - LENGTH 125 MM | 80 | 80-82 |
| DIE SET N. 82 - LENGTH 135 MM | 82 | 82-90 |
| DIE SET N. 86* - LENGTH 150 MM (FOR DIAMONDSPIR 2½") | 86* | 86-90 |
| DIE SET N. 90 - LENGTH 125 MM | 90 | 90-95 |
| DIE SET N. 95 - LENGTH 150 MM (FOR DIAMONDSPIR 2½") | 95* | 95-105 |
| DIE SET N. 99 - LENGTH 125 MM | 99 | 95-105 |
| DIE SET N. 105 - LENGTH 150 MM | 105 | 99-109 |
| DIE SET N. 112 - LENGTH 150 MM | 112 | 112-122 |
| DIE SET N. 117 - LENGTH 110 MM | 117 | 117-127 |
| DIE SET N. 122 - LENGTH 130 MM, REINFORCED PIN | 122 | 122-130 |

MS 450 XL

PG. 47

| DESCRIPTION | N° | CRIMP RANGE |
|--|-----|-------------|
| DIE SET N. 73 - LENGTH 125 MM | 73 | 73-80 |
| DIE SET N. 80 - LENGTH 125 MM | 80 | 80-86 |
| DIE SET N. 86 - LENGTH 125 MM | 86 | 86-90 |
| DIE SET N. 90 - LENGTH 125 MM | 90 | 90-95 |
| DIE SET N. 95 - LENGTH 125 MM | 95 | 95-105 |
| DIE SET N. 99 - LENGTH 125 MM | 99 | 99-112 |
| DIE SET N. 112 - LENGTH 125 MM | 112 | 112-117 |
| DIE SET N. 117 - LENGTH 125 MM | 117 | 117-122 |
| DIE SET N. 122 - LENGTH 125 MM | 122 | 122-130 |
| DIE SET N. 130 - LENGTH 140 MM, REINFORCED PIN | 130 | 130-150 |
| DIE SET N. 169 - LENGTH 140 MM, REINFORCED PIN | 169 | 169-189 |
| DIE SET N. 182 - LENGTH 130 MM, REINFORCED PIN | 182 | 182-202 |
| DIE SET N. 240 - LENGTH 130 MM, REINFORCED PIN | 240 | 240-260 |

XL CRIMP MS 550 / XL CRIMP 550-16

PG. 48

| DESCRIPTION | N° | CRIMP RANGE |
|--------------------------------|-----|-------------|
| DIE SET N. 73 - LENGTH 125 MM | 73 | 73-80 |
| DIE SET N. 80 - LENGTH 125 MM | 80 | 80-86 |
| DIE SET N. 86 - LENGTH 125 MM | 86 | 86-90 |
| DIE SET N. 90 - LENGTH 125 MM | 90 | 90-95 |
| DIE SET N. 95 - LENGTH 125 MM | 95 | 95-105 |
| DIE SET N. 99 - LENGTH 125 MM | 99 | 99-112 |
| DIE SET N. 112 - LENGTH 125 MM | 112 | 112-117 |
| DIE SET N. 117 - LENGTH 125 MM | 117 | 117-122 |
| DIE SET N. 122 - LENGTH 125 MM | 122 | 122-130 |
| DIE SET N. 130 - LENGTH 200 MM | 130 | 130-140 |
| DIE SET N. 140 - LENGTH 200 MM | 140 | 140-150 |
| DIE SET N. 150 - LENGTH 200 MM | 150 | 150-160 |
| DIE SET N. 156 - LENGTH 200 MM | 156 | 156-166 |
| DIE SET N. 160 - LENGTH 200 MM | 160 | 160-180 |
| DIE SET N. 165 - LENGTH 200 MM | 165 | 165-185 |
| DIE SET N. 170 - LENGTH 200 MM | 170 | 170-190 |
| DIE SET N. 176 - LENGTH 200 MM | 176 | 176-196 |
| DIE SET N. 178 - LENGTH 200 MM | 178 | 178-198 |
| DIE SET N. 180 - LENGTH 200 MM | 180 | 180-200 |
| DIE SET N. 200 - LENGTH 200 MM | 200 | 200-220 |
| DIE SET N. 215 - LENGTH 200 MM | 215 | 215-235 |
| DIE SET N. 225 - LENGTH 200 MM | 225 | 225-245 |
| DIE SET N. 230 - LENGTH 200 MM | 230 | 230-250 |
| DIE SET N. 235 - LENGTH 200 MM | 235 | 235-255 |
| DIE SET N. 250 - LENGTH 200 MM | 250 | 250-270 |
| DIE SET N. 260 - LENGTH 200 MM | 260 | 260-280 |
| DIE SET N. 265 - LENGTH 200 MM | 265 | 265-285 |
| DIE SET N. 280 - LENGTH 200 MM | 280 | 280-300 |
| DIE SET N. 282 - LENGTH 200 MM | 282 | 282-302 |
| DIE SET N. 285 - LENGTH 200 MM | 285 | 285-305 |
| DIE SET N. 290 - LENGTH 200 MM | 290 | 290-310 |
| DIE SET N. 308 - LENGTH 200 MM | 308 | 308-328 |
| DIE SET N. 317 - LENGTH 200 MM | 317 | 317-337 |
| DIE SET N. 330 - LENGTH 200 MM | 330 | 330-350 |
| DIE SET N. 340 - LENGTH 200 MM | 340 | 340-360 |

| MACHINE | HOSE TYPE | FITTING TYPE | MAX HOSE SIZE |
|------------|-----------------------------|--|---------------|
| MHP 80 EVO | 2 WIRE BRAID & TEXTILE | MF2000 MULTIFIT; MF3000 OPK; MF3000 OPF | 1" |
| | 3 WIRE (1 BRAID + 2 SPIRAL) | MF2000 MULTIFIT | ½" |
| | 4 WIRE SPIRALS | MF2000 MULTIFIT; MF3000 OPK | ½" |

| MACHINE | HOSE TYPE | FITTING TYPE | MAX HOSE SIZE |
|-------------|-----------------------------|--|---------------|
| MHP 110 EVO | 2 WIRE BRAID & TEXTILE | MF2000 MULTIFIT; MF3000 OPK; MF3000 OPF | 1" |
| | 3 WIRE (1 BRAID + 2 SPIRAL) | MF2000 MULTIFIT | ¾" |
| | 4 WIRE SPIRALS | MF2000 MULTIFIT; MF3000 OPK | 1" |

| MACHINE | HOSE TYPE | FITTING TYPE | MAX HOSE SIZE |
|---------|-----------------------------|--|---------------|
| MHP 137 | 2 WIRE BRAID & TEXTILE | MF2000 MULTIFIT; MF3000 OPK; MF3000 OPF | 1 ¼" |
| | 3 WIRE (1 BRAID + 2 SPIRAL) | MF2000 MULTIFIT | 1 ¼" |
| | 4 WIRE SPIRALS | MF2000 MULTIFIT; MF3000 OPK | 1 ¼" |
| | 3 WIRE (1 BRAID + 2 SPIRAL) | MF2000 INTERLOCK PLUS; MF2000 SPIRALFIT | ¾" |
| | 4 WIRE SPIRALS | MF2000 INTERLOCK PLUS; MF2000 SPIRALFIT | ¾" |

| MACHINE | HOSE TYPE | FITTING TYPE | MAX HOSE SIZE |
|-----------------------------|-----------------------------|--|---------------|
| MRB 137 EVO R / MRB 137 EVO | 2 WIRE BRAID & TEXTILE | MF2000 MULTIFIT; MF3000 OPK; MF3000 OPF | 1 ¼" |
| | 3 WIRE (1 BRAID + 2 SPIRAL) | MF2000 MULTIFIT | 1 ¼" |
| | 4 WIRE SPIRALS | MF2000 MULTIFIT; MF3000 OPK | 1 ¼" |
| | 3 WIRE (1 BRAID + 2 SPIRAL) | MF2000 INTERLOCK PLUS; MF2000 SPIRALFIT | ¾" |
| | 4 WIRE SPIRALS | MF2000 INTERLOCK PLUS; MF2000 SPIRALFIT | ¾" |

| MACHINE | HOSE TYPE | FITTING TYPE | MAX HOSE SIZE |
|------------|-----------------------------|---|---------------|
| MB 240 EVO | 2 WIRE BRAID & TEXTILE | MF2000 MULTIFIT; MF3000 OPK; MF3000 OPF | 2" |
| | 3 WIRE (1 BRAID + 2 SPIRAL) | MF2000 MULTIFIT; MF2000 INTERLOCK PLUS; MF2000 SPIRALFIT | 1 ¼" |
| | 4 WIRE SPIRALS | MF2000 MULTIFIT; MF3000 OPK | 2" |
| | 4 WIRE SPIRALS | MF2000 INTERLOCK PLUS; MF2000 SPIRALFIT | 1 ¼" |
| | 6 WIRE SPIRAL | MF2000 INTERLOCK PLUS; | 1" |

| MACHINE | HOSE TYPE | FITTING TYPE | MAX HOSE SIZE |
|--------------------------------|------------------------------------|---|---------------|
| MB 350 EVO / MB 350 EVO - L | 2 WIRE BRAID & TEXTILE | MF2000 MULTIFIT; MF3000 OPF; MF3000 OPK | 3" |
| | 3 WIRE (1 BRAID + 2 SPIRAL) | MF2000 MULTIFIT; MF2000 INTERLOCK PLUS; MF2000 SPIRALFIT | 1 ¼" |
| | 4 WIRE SPIRALS | MF2000 MULTIFIT; MF2000 INTERLOCK PLUS; MF2000 SPIRALFIT; MF3000 OPK | 2" |
| | 5 WIRE (4 SPIRAL + 1 BRAID) | MF2000 INTERLOCK PLUS | 1 ¼" |
| | 7 WIRE (6 SPIRAL + 1 BRAID) | MF2000 INTERLOCK SUPER | 1 ¼" |
| | 6 WIRE SPIRALS (350 BAR / 5000PSI) | MF2000 INTERLOCK PLUS; MF2000 SPIRALFIT | 2" |
| | 6 WIRE SPIRAL (420 BAR / 5000PSI) | MF2000 INTERLOCK PLUS; MF2000 INTERLOCK SUPER | 1 ¼" |
| | 8 WIRE SPIRALS | MF2000 INTERLOCK PLUS | 1 ¼" |

| MACHINE | HOSE TYPE | FITTING TYPE | MAX HOSE SIZE |
|-------------------------|-----------------------------|---|---------------|
| GOLDEN CRIMP 420 EVO | 2 WIRE BRAID & TEXTILE | MF2000 MULTIFIT; MF3000 OPF; MF3000 OPK | 4" |
| | 3 WIRE (1 BRAID + 2 SPIRAL) | MF2000 MULTIFIT; MF2000 INTERLOCK PLUS; MF2000 SPIRALFIT | 1 ¼" |
| | 4 WIRE SPIRALS | MF2000 MULTIFIT; MF3000 OPK; MF2000 INTERLOCK PLUS; MF2000 SPIRALFIT; | 3" |
| | 5 WIRE (4 SPIRAL + 1 BRAID) | MF2000 INTERLOCK PLUS | 1 ¼" |
| | 7 WIRE (6 SPIRAL + 1 BRAID) | MF2000 INTERLOCK SUPER | 1 ½" |
| | 6 WIRE SPIRALS | MF2000 INTERLOCK SUPER; MF2000 SPIRALFIT-GX; MF2000 INTERLOCK PLUS; MF2000 SPIRALFIT | 2" |
| | 8 WIRE SPIRALS | MF2000 INTERLOCK PLUS | 1 ½" |

| MACHINE | HOSE TYPE | FITTING TYPE | MAX HOSE SIZE |
|----------|-----------------------------|--|---------------|
| MV 137 L | 2 WIRE BRAID & TEXTILE | MF2000 MULTIFIT; MF3000 OPF; MF3000 OPK | 1 ¼" |
| | 3 WIRE (1 BRAID + 2 SPIRAL) | MF2000 MULTIFIT | 1 ¼" |
| | 4 WIRE SPIRALS | MF2000 MULTIFIT; MF3000 OPK | 1 ¼" |
| | 3 WIRE (1 BRAID + 2 SPIRAL) | MF2000 INTERLOCK PLUS; MF2000 SPIRALFIT | ¾" |
| | 4 WIRE SPIRALS | MF2000 INTERLOCK PLUS; MF2000 SPIRALFIT | ¾" |

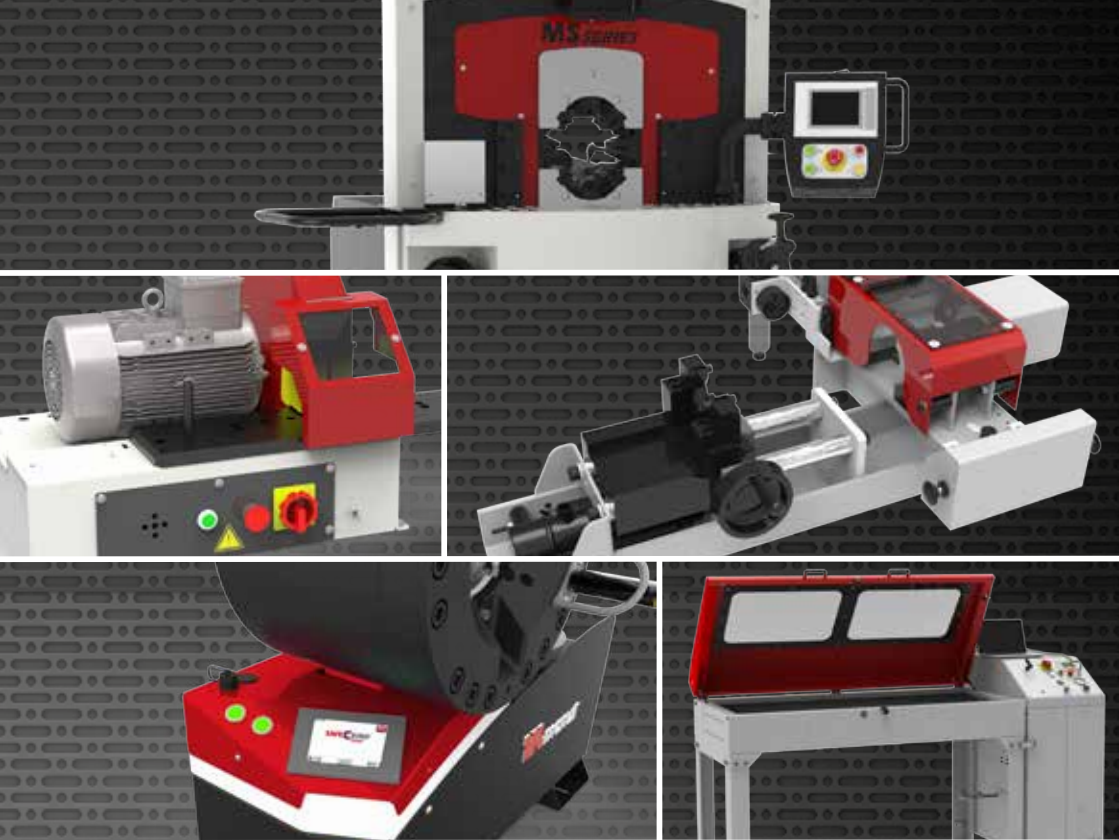
| MACHINE | HOSE TYPE | FITTING TYPE | MAX HOSE SIZE |
|-------------------|-----------------------------|---|---------------|
| MV 240 / 240 L | 2 WIRE BRAID & TEXTILE | MF2000 MULTIFIT; MF3000 OPK; MF3000 OPF | 2" |
| | 3 WIRE (1 BRAID + 2 SPIRAL) | MF2000 MULTIFIT; MF2000 INTERLOCK PLUS; MF2000 SPIRALFIT | 1 ¼" |
| | 4 WIRE SPIRALS | MF2000 MULTIFIT; MF3000 OPK | 2" |
| | 4 WIRE SPIRALS | MF2000 INTERLOCK PLUS; MF2000 SPIRALFIT | 1 ¼" |
| | 6 WIRE SPIRAL | MF2000 INTERLOCK PLUS; | 1" |

| MACHINE | HOSE TYPE | FITTING TYPE | MAX HOSE SIZE |
|---------|-----------------------------|---|---------------|
| MV 350 | 2 WIRE BRAID & TEXTILE | MF2000 MULTIFIT; MF3000 OPF; MF3000 OPK | 3" |
| | 3 WIRE (1 BRAID + 2 SPIRAL) | MF2000 MULTIFIT; MF2000 INTERLOCK PLUS; MF2000 SPIRALFIT | 1 ¼" |
| | 4 WIRE SPIRALS | MF2000 MULTIFIT; MF2000 INTERLOCK PLUS; MF2000 SPIRALFIT; MF3000 OPK | 2" |
| | 5 WIRE (4 SPIRAL + 1 BRAID) | MF2000 INTERLOCK PLUS | 1 ¼" |
| | 7 WIRE (6 SPIRAL + 1 BRAID) | MF2000 INTERLOCK SUPER | 1 ½" |
| | 6 WIRE SPIRAL | MF2000 INTERLOCK PLUS; MF2000 INTERLOCK SUPER; MF2000 SPIRALFIT | 1 ½" |

| MACHINE | HOSE TYPE | FITTING TYPE | MAX HOSE SIZE |
|---------|-----------------------------|--|---------------|
| MS 140 | 2 WIRE BRAID & TEXTILE | MF2000 MULTIFIT; MF3000 OPF; MF3000 OPK | 1 ¼" |
| | 3 WIRE (1 BRAID + 2 SPIRAL) | MF2000 MULTIFIT; | 1 ¼" |
| | 4 WIRE SPIRALS | MF2000 MULTIFIT; MF3000 OPK | 1 ¼" |
| | 3 WIRE (1 BRAID + 2 SPIRAL) | MF2000 INTERLOCK PLUS; MF2000 SPIRALFIT | 1" |
| | 4 WIRE SPIRALS | MF2000 INTERLOCK PLUS; MF2000 SPIRALFIT | 1" |

| MACHINE | HOSE TYPE | FITTING TYPE | MAX HOSE SIZE |
|---------|--|---|---------------|
| MS 320 | 2 WIRE BRAID & TEXTILE | MF2000 MULTIFIT; MF3000 OPF; MF3000 OPK | 3" |
| | 3 WIRE (1 BRAID + 2 SPIRAL) | MF2000 MULTIFIT; MF2000 INTERLOCK PLUS; MF2000 SPIRALFIT | 1 ¼" |
| | 4 WIRE SPIRALS | MF2000 MULTIFIT; MF2000 INTERLOCK PLUS; MF2000 SPIRALFIT; MF3000 OPK | 2" |
| | 5 WIRE (4 SPIRAL + 1 BRAID) | MF2000 INTERLOCK PLUS | 1 ¼" |
| | 7 WIRE (6 SPIRAL + 1 BRAID) | MF2000 INTERLOCK SUPER | 1 ½" |
| | 6 WIRE SPIRALS (ROCKMASTER/13 - GOLDENISO/35 XTRAFLEX - SHIELDMASTER/35 - DIAMONDSPIR) | MF2000 INTERLOCK PLUS; MF2000 SPIRALFIT | 2" |
| | 8 WIRE SPIRALS | MF2000 INTERLOCK PLUS | 1 ¼" |

| MACHINE | HOSE TYPE | FITTING TYPE | MAX HOSE SIZE |
|---------------|-----------------------------|--|---------------|
| MS 480 | 2 WIRE BRAID & TEXTILE | MF2000 MULTIFIT; MF3000 OPF; MF3000 OPK | 4" |
| | 3 WIRE (1 BRAID + 2 SPIRAL) | MF2000 MULTIFIT; MF2000 INTERLOCK PLUS; MF2000 SPIRALFIT; | 1 ¼" |
| | 4 WIRE SPIRALS | MF2000 MULTIFIT; MF2000 INTERLOCK PLUS; MF2000 SPIRALFIT; MF3000 OPK | 4" |
| | 5 WIRE (4 SPIRAL + 1 BRAID) | MF2000 INTERLOCK PLUS | 1 ¼" |
| | 7 WIRE (6 SPIRAL + 1 BRAID) | MF2000 INTERLOCK SUPER | 1 ½" |
| | 7 WIRE (6 SPIRAL + 1 BRAID) | MF2000 INTERLOCK PLUS | 2" |
| | 6 WIRE SPIRALS | MF2000 INTERLOCK PLUS; MF2000 SPIRALFIT | 3" |
| | 6 WIRE SPIRALS | MF2000 INTERLOCK SUPER; MF2000 SPIRALFIT-GX | 2" |
| | 6 WIRE SPIRALS | MF2000 INTERLOCK SUPER | 1 ½" |
| MACHINE | HOSE TYPE | FITTING TYPE | MAX HOSE SIZE |
| MS 800 | INDUSTRIAL TEXTILE HOSES | VARIOUS | 8" |
| | 2 WIRE BRAID & TEXTILE | MF2000 MULTIFIT; MF3000 OPF; MF3000 OPK; | 4" |
| | 3 WIRE (1 BRAID + 2 SPIRAL) | MF2000 MULTIFIT; MF2000 INTERLOCK PLUS; MF2000 SPIRALFIT; | 1 ¼" |
| | 4 WIRE SPIRALS | MF2000 MULTIFIT; MF2000 INTERLOCK PLUS; MF2000 SPIRALFIT; MF3000 OPK | 4" |
| | 5 WIRE (4 SPIRAL + 1 BRAID) | MF2000 INTERLOCK PLUS | 1 ¼" |
| | 7 WIRE (6 SPIRAL + 1 BRAID) | MF2000 INTERLOCK SUPER | 3" |
| | 6/8 WIRE SPIRALS | MF2000 INTERLOCK PLUS; MF2000 SPIRALFIT; MF2000 INTERLOCK SUPER | 3" |



SCAN HERE FOR
CONTACT INFORMATION

 **manuli**[®]
HYDRAULICS

www.manuli-hydraulics.com